

SRPK2 Rabbit pAb

Catalog No.: A17536

Basic Information

Observed MW

120kDa

Calculated MW

78kDa

Category

Primary antibody

Applications

WB, ELISA

Cross-Reactivity

Human, Mouse, Rat

Background

Enables ATP binding activity; magnesium ion binding activity; and protein serine/threonine kinase activity. Involved in several processes, including nucleic acid metabolic process; peptidyl-serine phosphorylation; and regulation of viral genome replication. Located in chromatin; cytosol; and nuclear lumen.

Recommended Dilutions

WB 1:500 - 1:2000

ELISA Recommended starting concentration is 1 µg/mL. Please optimize the concentration based on your specific assay requirements.

Immunogen Information

Gene ID

6733

Swiss Prot

P78362

Immunogen

Recombinant protein (or fragment). This information is considered to be commercially sensitive.

Synonyms

SFRSK2; SRPK2

Contact

 | 400-999-6126

 | cn.market@abclonal.com.cn

 | www.abclonal.com.cn

Product Information

Source

Rabbit

Isotype

IgG

Purification

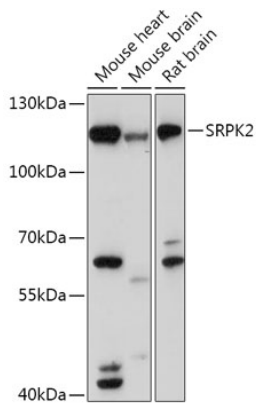
Affinity purification

Storage

Store at -20°C. Avoid freeze / thaw cycles.

Buffer: PBS with 0.01% thimerosal, 50% glycerol, pH 7.3.

Validation Data



Western blot analysis of various lysates using SRPK2 Rabbit pAb (A17536) at 1:1000 dilution.
Secondary antibody: HRP-conjugated Goat anti-Rabbit IgG (H+L) (AS014) at 1:10000 dilution.
Lysates/proteins: 25µg per lane.
Blocking buffer: 3% nonfat dry milk in TBST.
Detection: ECL Basic Kit (RM00020).
Exposure time: 120s.