

# MAFK Rabbit pAb

Catalog No.: A17551 **1 Publications**

## Basic Information

### Observed MW

17kDa

### Calculated MW

18kDa

### Category

Primary antibody

### Applications

ELISA, WB

### Cross-Reactivity

Human

## Background

The developmentally regulated expression of the globin genes depends on upstream regulatory elements termed locus control regions (LCRs). LCRs are associated with powerful enhancer activity that is mediated by the transcription factor NFE2 (nuclear factor erythroid-2). NFE2 recognition sites are also present in the gene promoters of 2 heme biosynthetic enzymes, porphobilinogen deaminase (PBGD; MIM 609806) and ferrochelatase (FECH; MIM 612386). NFE2 DNA-binding activity consists of a heterodimer containing an 18-kD Maf protein (MafF, MafG (MIM 602020), or MafK) and p45 (MIM 601490). Both subunits are members of the activator protein-1 superfamily of basic leucine zipper (bZIP) proteins (see MIM 165160). Maf homodimers suppress transcription at NFE2 sites.

## Recommended Dilutions

WB 1:500 - 1:2000

## Immunogen Information

### Gene ID

7975

### Swiss Prot

O60675

### Immunogen

A synthetic peptide corresponding to a sequence within amino acids 1-50 of human MAFK (NP\_002351.1).

### Synonyms

P18; NFE2U; MAFK

## Contact

☎ | 400-999-6126

✉ | [cn.market@abclonal.com.cn](mailto:cn.market@abclonal.com.cn)

🌐 | [www.abclonal.com.cn](http://www.abclonal.com.cn)

## Product Information

### Source

Rabbit

### Isotype

IgG

### Purification

Affinity purification

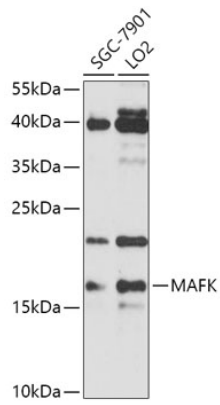
### Storage

Store at -20°C. Avoid freeze / thaw cycles.

Buffer: PBS with 0.01% thimerosal, 50% glycerol, pH7.3.

## Validation Data

---



Western blot analysis of various lysates using MAFK Rabbit pAb (A17551) at 1:1000 dilution.  
Secondary antibody: HRP Goat Anti-Rabbit IgG (H+L) (AS014) at 1:10000 dilution.  
Lysates/proteins: 25µg per lane.  
Blocking buffer: 3% nonfat dry milk in TBST.  
Detection: ECL Basic Kit (RM00020).  
Exposure time: 90s.