

# LY6D Rabbit pAb

Catalog No.: A17570 **2 Publications**

## Basic Information

### Observed MW

16kDa

### Calculated MW

13kDa

### Category

Primary antibody

### Applications

ELISA, WB

### Cross-Reactivity

Human, Mouse

## Background

Predicted to be involved in lymphocyte differentiation. Predicted to act upstream of or within response to stilbenoid. Predicted to be located in extracellular region and plasma membrane. Predicted to be active in cell surface.

## Recommended Dilutions

**WB** 1:500 - 1:1000

## Immunogen Information

### Gene ID

8581

### Swiss Prot

Q14210

### Immunogen

Recombinant fusion protein containing a sequence corresponding to amino acids 25-95 of human LY6D (NP\_003686.1).

### Synonyms

E48; Ly-6D; LY6D

## Contact

 | 400-999-6126

 | [cn.market@abclonal.com.cn](mailto:cn.market@abclonal.com.cn)

 | [www.abclonal.com.cn](http://www.abclonal.com.cn)

## Product Information

### Source

Rabbit

### Isotype

IgG

### Purification

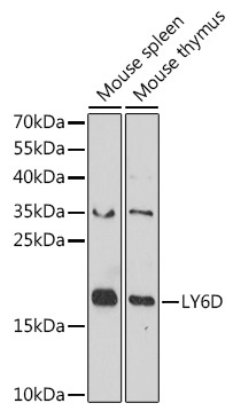
Affinity purification

### Storage

Store at -20°C. Avoid freeze / thaw cycles.

Buffer: PBS with 0.01% thimerosal, 50% glycerol, pH7.3.

# Validation Data



Western blot analysis of various lysates using LY6D Rabbit pAb (A17570) at 1:1000 dilution.  
Secondary antibody: HRP Goat Anti-Rabbit IgG (H+L) (AS014) at 1:10000 dilution.  
Lysates/proteins: 25µg per lane.  
Blocking buffer: 3% nonfat dry milk in TBST.  
Detection: ECL Basic Kit (RM00020).  
Exposure time: 90s.