

# SUPT7L Rabbit pAb

Catalog No.: A17601

## Basic Information

### Observed MW

60kDa

### Calculated MW

46kDa

### Category

Primary antibody

### Applications

ELISA, WB

### Cross-Reactivity

Human, Mouse, Rat

## Background

SUPT7L is a protein subunit of the human STAGA complex (SPT3; (MIM 602947)/TAF9 (MIM 600822)/GCN5 (MIM 602301) acetyltransferase complex), which is a chromatin-modifying multiprotein complex (Martinez et al., 2001 [PubMed 11564863]).

## Recommended Dilutions

WB 1:500 - 1:2000

## Immunogen Information

### Gene ID

9913

### Swiss Prot

O94864

### Immunogen

Recombinant fusion protein containing a sequence corresponding to amino acids 210-400 of human SUPT7L (NP\_001269658).

### Synonyms

SPT7L; STAF65; SUPT7H; STAF65G; STAF65(gamma); SUPT7L

## Contact

☎ | 400-999-6126

✉ | [cn.market@abclonal.com.cn](mailto:cn.market@abclonal.com.cn)

🌐 | [www.abclonal.com.cn](http://www.abclonal.com.cn)

## Product Information

### Source

Rabbit

### Isotype

IgG

### Purification

Affinity purification

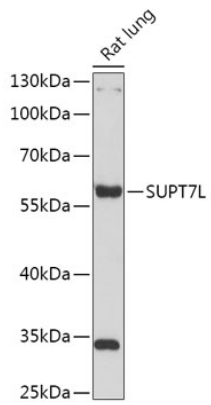
### Storage

Store at -20°C. Avoid freeze / thaw cycles.

Buffer: PBS with 0.01% thimerosal, 50% glycerol, pH7.3.

## Validation Data

---



Western blot analysis of lysates from Rat lung, using SUPT7L Rabbit pAb (A17601) at 1:1000 dilution.  
Secondary antibody: HRP Goat Anti-Rabbit IgG (H+L) (AS014) at 1:10000 dilution.  
Lysates/proteins: 25µg per lane.  
Blocking buffer: 3% nonfat dry milk in TBST.  
Detection: ECL Basic Kit (RM00020).  
Exposure time: 15s.