

TOM1L1 Rabbit pAb

Catalog No.: A17602

Basic Information

Observed MW

53kDa

Calculated MW

53kDa

Category

Primary antibody

Applications

ELISA, WB

Cross-Reactivity

Human, Mouse, Rat

Background

Enables clathrin binding activity and protein kinase binding activity. Involved in negative regulation of mitotic nuclear division; positive regulation of protein phosphorylation; and signal transduction. Located in cytosol and endosome.

Recommended Dilutions

WB 1:500 - 1:2000

Immunogen Information

Gene ID

10040

Swiss Prot

O75674

Immunogen

A synthetic peptide corresponding to a sequence within amino acids 250-350 of human TOM1L1 (NP_005477.2).

Synonyms

SRCASM; TOM1L1

Contact

☎ | 400-999-6126

✉ | cn.market@abclonal.com.cn

🌐 | www.abclonal.com.cn

Product Information

Source

Rabbit

Isotype

IgG

Purification

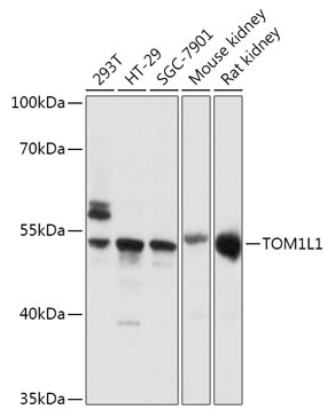
Affinity purification

Storage

Store at -20°C. Avoid freeze / thaw cycles.

Buffer: PBS with 0.01% thimerosal, 50% glycerol, pH7.3.

Validation Data



Western blot analysis of various lysates using TOM1L1 Rabbit pAb (A17602) at 1:1000 dilution.
Secondary antibody: HRP Goat Anti-Rabbit IgG (H+L) (AS014) at 1:10000 dilution.
Lysates/proteins: 25µg per lane.
Blocking buffer: 3% nonfat dry milk in TBST.
Detection: ECL Basic Kit (RM00020).
Exposure time: 90s.