

# TMED2 Rabbit pAb

Catalog No.: A17622 **1 Publications**

## Basic Information

### Observed MW

23kDa

### Calculated MW

23kDa

### Category

Primary antibody

### Applications

ELISA, WB, IF/ICC

### Cross-Reactivity

Human, Mouse, Rat

## Background

Involved in several processes, including Golgi organization; negative regulation of GTPase activity; and protein localization to plasma membrane. Located in Golgi apparatus; endoplasmic reticulum; and endoplasmic reticulum-Golgi intermediate compartment.

## Recommended Dilutions

WB 1:500 - 1:2000

IF/ICC 1:50 - 1:200

## Immunogen Information

### Gene ID

10959

### Swiss Prot

Q15363

### Immunogen

Recombinant fusion protein containing a sequence corresponding to amino acids 60-170 of human TMED2 (NP\_006806.1).

### Synonyms

p24; P24A; RNP24; p24b1; p24beta1; TMED2

## Contact

☎ | 400-999-6126

✉ | [cn.market@abclonal.com.cn](mailto:cn.market@abclonal.com.cn)

🌐 | [www.abclonal.com.cn](http://www.abclonal.com.cn)

## Product Information

### Source

Rabbit

### Isotype

IgG

### Purification

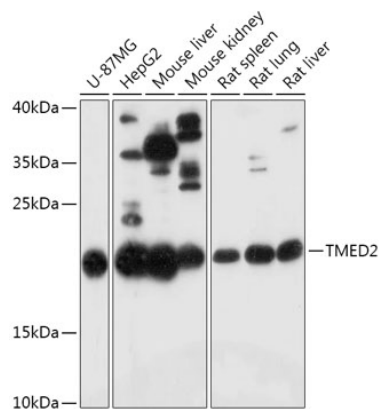
Affinity purification

### Storage

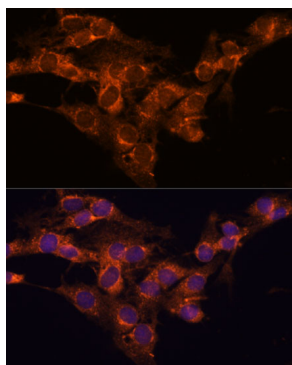
Store at -20°C. Avoid freeze / thaw cycles.

Buffer: PBS with 0.01% thimerosal, 50% glycerol, pH7.3.

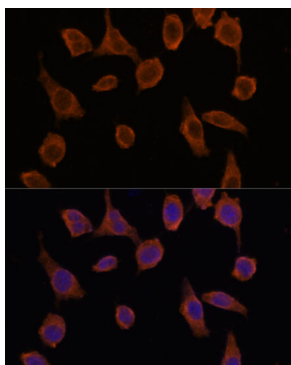
## Validation Data



Western blot analysis of various lysates using TMED2 Rabbit pAb (A17622) at 1:1000 dilution. Secondary antibody: HRP Goat Anti-Rabbit IgG (H+L) (AS014) at 1:10000 dilution. Lysates/proteins: 25µg per lane. Blocking buffer: 3% nonfat dry milk in TBST. Detection: ECL Basic Kit (RM00020). Exposure time: 3min.



Immunofluorescence analysis of C6 cells using TMED2 Rabbit pAb (A17622) at dilution of 1:100. Secondary antibody: Cy3 Goat Anti-Rabbit IgG (H+L) (AS007) at 1:500 dilution. Blue: DAPI for nuclear staining.



Immunofluorescence analysis of L929 cells using TMED2 Rabbit pAb (A17622) at dilution of 1:100. Secondary antibody: Cy3 Goat Anti-Rabbit IgG (H+L) (AS007) at 1:500 dilution. Blue: DAPI for nuclear staining.