

CA5B Rabbit pAb

Catalog No.: A17633 **1 Publications**

Basic Information

Observed MW

32kDa

Calculated MW

36kDa

Category

Primary antibody

Applications

ELISA,WB,IF/ICC

Cross-Reactivity

Human, Mouse, Rat

Background

Carbonic anhydrases (CAs) are a large family of zinc metalloenzymes that catalyze the reversible hydration of carbon dioxide. They participate in a variety of biological processes, including respiration, calcification, acid-base balance, bone resorption, and the formation of aqueous humor, cerebrospinal fluid, saliva, and gastric acid. They show extensive diversity in tissue distribution and in their subcellular localization. This gene encodes carbonic anhydrase 5B. CA5B, and the related CA5A gene, has its expression localized in the mitochondria though CA5B has a wider tissue distribution than CA5A, which is restricted to the liver, kidneys, and skeletal muscle. A carbonic anhydrase pseudogene (CA5BP1) is adjacent to the CA5B gene and these two loci produce CA5BP1-CA5B readthrough transcripts.

Recommended Dilutions

WB	1:500 - 1:2000
IF/ICC	1:50 - 1:200

Immunogen Information

Gene ID

11238

Swiss Prot

Q9Y2D0

Immunogen

Recombinant fusion protein containing a sequence corresponding to amino acids 1-317 of human CA5B (NP_009151.1).

Synonyms

CAVB; CA-VB; CA5B

Contact

☎ | 400-999-6126

✉ | cn.market@abclonal.com.cn

🌐 | www.abclonal.com.cn

Product Information

Source

Rabbit

Isotype

IgG

Purification

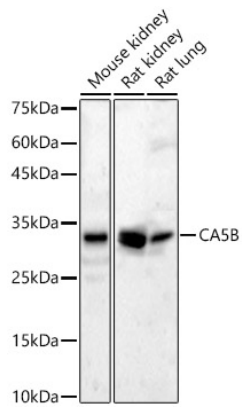
Affinity purification

Storage

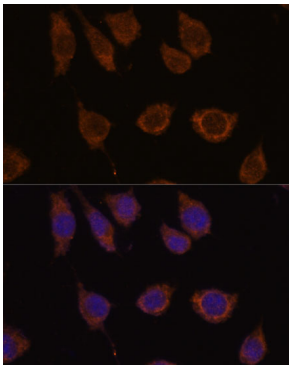
Store at -20°C. Avoid freeze / thaw cycles.

Buffer: PBS with 0.01% thimerosal, 50% glycerol, pH7.3.

Validation Data



Western blot analysis of various lysates, using CA5B Rabbit pAb (A17633) at 1:1000 dilution.
Secondary antibody: HRP Goat Anti-Rabbit IgG (H+L) (AS014) at 1:10000 dilution.
Lysates/proteins: 25ug per lane.
Blocking buffer: 3% nonfat dry milk in TBST.
Detection: ECL Basic Kit (RM00020).
Exposure time: 90s.



Immunofluorescence analysis of L929 cells using CA5B antibody (A17633) at dilution of 1:100. Blue: DAPI for nuclear staining.