

SP140 Rabbit pAb

Catalog No.: A17634 **1 Publications**

Basic Information

Observed MW

98kDa

Calculated MW

98kDa

Category

Primary antibody

Applications

ELISA, WB

Cross-Reactivity

Mouse, Rat

Background

This gene encodes a member of the SP100 family of proteins, which share common domains including an N-terminal homogeneously staining region domain followed by a SP100/autoimmune regulator/NucP41/P75/deformed epidermal autoregulatory factor domain, a plant homeobox zinc finger, and a bromodomain. The encoded protein is interferon-inducible and is expressed at high levels in the nuclei of leukocytes. Variants of this gene have been associated with multiple sclerosis, Crohn's disease, and chronic lymphocytic leukemia. Alternative splicing results in multiple variants.

Recommended Dilutions

WB 1:500 - 1:2000

Immunogen Information

Gene ID

11262

Swiss Prot

Q13342

Immunogen

Recombinant fusion protein containing a sequence corresponding to amino acids 1-180 of human SP140 (NP_001265380).

Synonyms

LYSP100; LYSP100-A; LYSP100-B; SP140

Contact

 | 400-999-6126

 | cn.market@abclonal.com.cn

 | www.abclonal.com.cn

Product Information

Source

Rabbit

Isotype

IgG

Purification

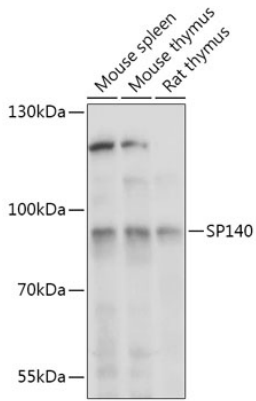
Affinity purification

Storage

Store at -20°C. Avoid freeze / thaw cycles.

Buffer: PBS with 0.01% thimerosal, 50% glycerol, pH 7.3.

Validation Data



Western blot analysis of various lysates using SP140 Rabbit pAb (A17634) at 1:1000 dilution.
Secondary antibody: HRP Goat Anti-Rabbit IgG (H+L) (AS014) at 1:10000 dilution.
Lysates/proteins: 25 μ g per lane.
Blocking buffer: 3% nonfat dry milk in TBST.
Detection: ECL Basic Kit (RM00020).
Exposure time: 30s.