

# HSPA4L Rabbit pAb

Catalog No.: A17637

## Basic Information

### Observed MW

115kDa

### Calculated MW

95kDa

### Category

Primary antibody

### Applications

ELISA, WB, IF/ICC

### Cross-Reactivity

Human, Mouse, Rat

## Background

The protein encoded by this gene is heat shock inducible and may act as a chaperone. The encoded protein can protect the heat-shocked cell against the harmful effects of aggregated proteins. This gene is highly expressed in leukemia cells and may be a good target for therapeutic intervention. Several transcripts encoding different isoforms have been found for this gene.

## Recommended Dilutions

**WB** 1:500 - 1:2000

**IF/ICC** 1:50 - 1:200

## Immunogen Information

### Gene ID

22824

### Swiss Prot

O95757

### Immunogen

Recombinant fusion protein containing a sequence corresponding to amino acids 500-600 of human HSPA4L (NP\_055093.2).

### Synonyms

APG1; APG-1; HSPH3; Osp94; HSPA4L

## Contact

 | 400-999-6126

 | [cn.market@abclonal.com.cn](mailto:cn.market@abclonal.com.cn)

 | [www.abclonal.com.cn](http://www.abclonal.com.cn)

## Product Information

### Source

Rabbit

### Isotype

IgG

### Purification

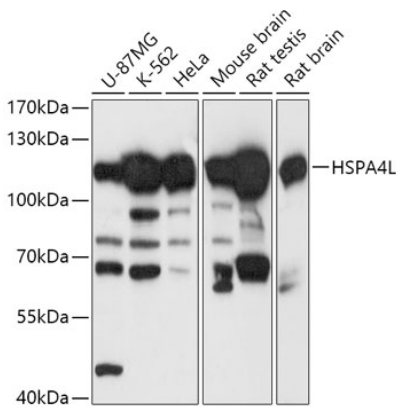
Affinity purification

### Storage

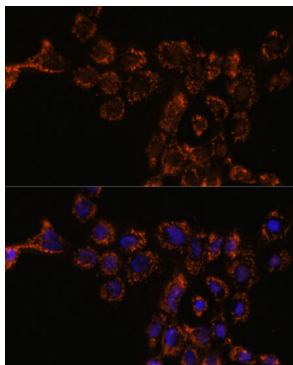
Store at -20°C. Avoid freeze / thaw cycles.

Buffer: PBS with 0.01% thimerosal, 50% glycerol, pH7.3.

## Validation Data



Western blot analysis of various lysates using HSPA4L Rabbit pAb (A17637) at 1:1000 dilution.  
Secondary antibody: HRP Goat Anti-Rabbit IgG (H+L) (AS014) at 1:10000 dilution.  
Lysates/proteins: 25µg per lane.  
Blocking buffer: 3% nonfat dry milk in TBST.  
Detection: ECL Basic Kit (RM00020).  
Exposure time: 5s.



Immunofluorescence analysis of A431 cells using HSPA4L Rabbit pAb (A17637) at dilution of 1:100. Secondary antibody: Cy3 Goat Anti-Rabbit IgG (H+L) (AS007) at 1:500 dilution. Blue: DAPI for nuclear staining.