

# MON1B Rabbit pAb

Catalog No.: A17640 **1 Publications**

## Basic Information

### Observed MW

59kDa

### Calculated MW

59kDa

### Category

Primary antibody

### Applications

ELISA, WB

### Cross-Reactivity

Human, Rat

## Background

Involved in early viral transcription and late viral transcription. Located in cytoplasm. Part of Mon1-Ccz1 complex.

## Recommended Dilutions

WB 1:500 - 1:2000

## Immunogen Information

### Gene ID

22879

### Swiss Prot

Q7L1V2

### Immunogen

Recombinant fusion protein containing a sequence corresponding to amino acids 481-547 of human MON1B (NP\_055755.1).

### Synonyms

SRG1; HSRG1; SAND2; MON1B

## Contact

☎ | 400-999-6126

✉ | [cn.market@abclonal.com.cn](mailto:cn.market@abclonal.com.cn)

🌐 | [www.abclonal.com.cn](http://www.abclonal.com.cn)

## Product Information

### Source

Rabbit

### Isotype

IgG

### Purification

Affinity purification

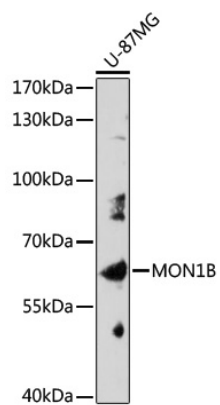
### Storage

Store at -20°C. Avoid freeze / thaw cycles.

Buffer: PBS with 0.01% thimerosal, 50% glycerol, pH7.3.

## Validation Data

---



Western blot analysis of lysates from U-87MG cells, using MON1B Rabbit pAb (A17640) at 1:1000 dilution.  
Secondary antibody: HRP Goat Anti-Rabbit IgG (H+L) (AS014) at 1:10000 dilution.  
Lysates/proteins: 25µg per lane.  
Blocking buffer: 3% nonfat dry milk in TBST.  
Detection: ECL Basic Kit (RM00020).  
Exposure time: 3min.