

# ABLIM3 Rabbit pAb

Catalog No.: A17643

## Basic Information

### Observed MW

78kDa

### Calculated MW

78kDa

### Category

Primary antibody

### Applications

ELISA, WB

### Cross-Reactivity

Mouse, Rat

## Background

This gene encodes a member of the actin-binding LIM (abLIM) family of proteins. These proteins are characterized by an N-terminal LIM domain and a C-terminal dematin-like domain. The encoded protein interacts with actin filaments and may be a component of adherens junctions in several cell types. A variant of this gene may be associated with pain sensitivity in male human patients.

## Recommended Dilutions

WB 1:500 - 1:2000

## Immunogen Information

### Gene ID

22885

### Swiss Prot

O94929

### Immunogen

Recombinant fusion protein containing a sequence corresponding to amino acids 350-520 of human ABLIM3 (NP\_001287957.1).

### Synonyms

HMFN1661; ABLIM3

## Contact

 | 400-999-6126

 | [cn.market@abclonal.com.cn](mailto:cn.market@abclonal.com.cn)

 | [www.abclonal.com.cn](http://www.abclonal.com.cn)

## Product Information

### Source

Rabbit

### Isotype

IgG

### Purification

Affinity purification

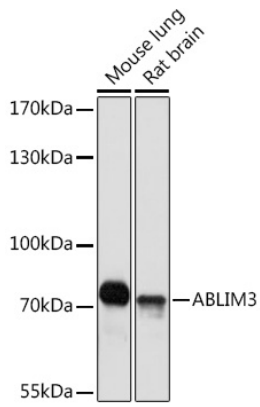
### Storage

Store at -20°C. Avoid freeze / thaw cycles.

Buffer: PBS with 0.01% thimerosal, 50% glycerol, pH7.3.

## Validation Data

---



Western blot analysis of various lysates using ABLIM3 Rabbit pAb (A17643) at 1:1000 dilution.  
Secondary antibody: HRP Goat Anti-Rabbit IgG (H+L) (AS014) at 1:10000 dilution.  
Lysates/proteins: 25µg per lane.  
Blocking buffer: 3% nonfat dry milk in TBST.  
Detection: ECL Basic Kit (RM00020).  
Exposure time: 30s.