

ELL2 Rabbit pAb

Catalog No.: A17645

Basic Information

Observed MW

75kDa

Calculated MW

72kDa

Category

Primary antibody

Applications

ELISA, WB

Cross-Reactivity

Rat

Background

Involved in snRNA transcription by RNA polymerase II. Located in nucleoplasm. Part of transcription elongation factor complex.

Recommended Dilutions

WB 1:500 - 1:1000

Immunogen Information

Gene ID

22936

Swiss Prot

O00472

Immunogen

Recombinant fusion protein containing a sequence corresponding to amino acids 200-292 of human ELL2 (NP_036213.2).

Synonyms

MRCCAT1; ELL2

Contact

☎ | 400-999-6126

✉ | cn.market@abclonal.com.cn

🌐 | www.abclonal.com.cn

Product Information

Source

Rabbit

Isotype

IgG

Purification

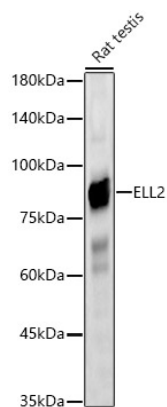
Affinity purification

Storage

Store at -20°C. Avoid freeze / thaw cycles.

Buffer: PBS with 0.01% thimerosal, 50% glycerol, pH7.3.

Validation Data



Western blot analysis of Rat testis, using ELL2 Rabbit pAb (A17645) at 1:1000 dilution.
Secondary antibody: HRP Goat Anti-Rabbit IgG (H+L) (AS014) at 1:10000 dilution.
Lysates/proteins: 25µg per lane.
Blocking buffer: 3% nonfat dry milk in TBST.
Detection: ECL Basic Kit (RM00020).
Exposure time: 30s.