

PCNX1 Rabbit pAb

Catalog No.: A17647

Basic Information

Observed MW

290kDa

Calculated MW

259kDa

Category

Primary antibody

Applications

ELISA, WB

Cross-Reactivity

Human

Background

This gene encodes an evolutionarily conserved transmembrane protein similar to the pecanex protein in *Drosophila*. The fly protein is a component of the Notch signaling pathway, which functions in several developmental processes.

Recommended Dilutions

WB 1:500 - 1:2000

Immunogen Information

Gene ID

22990

Swiss Prot

Q96RV3

Immunogen

A synthetic peptide corresponding to a sequence within amino acids 2250-2341 of human PCNX1 (NP_055797.2).

Synonyms

PCNX; PCNXL1; pecanex; PCNX1

Contact

 | 400-999-6126

 | cn.market@abclonal.com.cn

 | www.abclonal.com.cn

Product Information

Source

Rabbit

Isotype

IgG

Purification

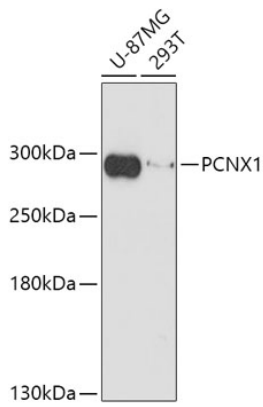
Affinity purification

Storage

Store at -20°C. Avoid freeze / thaw cycles.

Buffer: PBS with 0.01% thimerosal, 50% glycerol, pH7.3.

Validation Data



Western blot analysis of various lysates using PCNX1 Rabbit pAb (A17647) at 1:1000 dilution.
Secondary antibody: HRP Goat Anti-Rabbit IgG (H+L) (AS014) at 1:10000 dilution.
Lysates/proteins: 25 μ g per lane.
Blocking buffer: 3% nonfat dry milk in TBST.
Detection: ECL Basic Kit (RM00020).
Exposure time: 3min.