

CEP131 Rabbit pAb

Catalog No.: A17648

Basic Information

Observed MW

145kDa

Calculated MW

122kDa

Category

Primary antibody

Applications

ELISA, WB

Cross-Reactivity

Human, Mouse

Background

Enables protein homodimerization activity. Involved in several processes, including intraciliary transport involved in cilium assembly; protein localization to centrosome; and regulation of centrosome duplication. Located in several cellular components, including ciliary transition zone; intercellular bridge; and microtubule organizing center. Colocalizes with centrosome.

Recommended Dilutions

WB 1:500 - 1:2000

Immunogen Information

Gene ID

22994

Swiss Prot

Q9UPN4

Immunogen

A synthetic peptide corresponding to a sequence within amino acids 1000-1083 of human CEP131 (NP_001306157.1).

Synonyms

AZ1; ZA1; AZI1; CEP131

Contact

☎ | 400-999-6126

✉ | cn.market@abclonal.com.cn

🌐 | www.abclonal.com.cn

Product Information

Source

Rabbit

Isotype

IgG

Purification

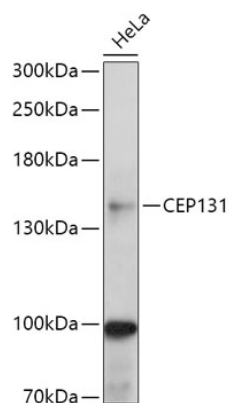
Affinity purification

Storage

Store at -20°C. Avoid freeze / thaw cycles.

Buffer: PBS with 0.01% thimerosal, 50% glycerol, pH7.3.

Validation Data



Western blot analysis of lysates from HeLa cells, using CEP131 Rabbit pAb (A17648) at 1:1000 dilution.
Secondary antibody: HRP Goat Anti-Rabbit IgG (H+L) (AS014) at 1:10000 dilution.
Lysates/proteins: 25µg per lane.
Blocking buffer: 3% nonfat dry milk in TBST.
Detection: ECL Basic Kit (RM00020).
Exposure time: 60s.