

LIMCH1 Rabbit pAb

Catalog No.: A17649 **1 Publications**

Basic Information

Observed MW

140kDa

Calculated MW

122kDa

Category

Primary antibody

Applications

ELISA, WB

Cross-Reactivity

Human

Background

Enables myosin II head/neck binding activity. Involved in several processes, including cytoplasmic actin-based contraction involved in cell motility; positive regulation of stress fiber assembly; and regulation of focal adhesion assembly. Located in stress fiber. Colocalizes with myosin II complex.

Recommended Dilutions

WB 1:500 - 1:2000

Immunogen Information

Gene ID

22998

Swiss Prot

Q9UPQ0

Immunogen

Recombinant fusion protein containing a sequence corresponding to amino acids 150-450 of human LIMCH1 (NP_001106189.1).

Synonyms

LMO7B; LIMCH1A; LIMCH1

Contact

☎ | 400-999-6126

✉ | cn.market@abclonal.com.cn

🌐 | www.abclonal.com.cn

Product Information

Source

Rabbit

Isotype

IgG

Purification

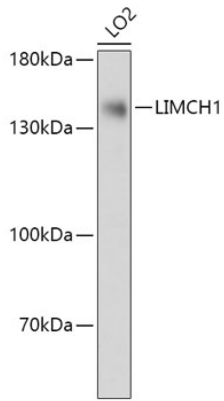
Affinity purification

Storage

Store at -20°C. Avoid freeze / thaw cycles.

Buffer: PBS with 0.01% thimerosal, 50% glycerol, pH7.3.

Validation Data



Western blot analysis of lysates from LO2 cells, using LIMCH1 Rabbit pAb (A17649) at 1:1000 dilution.
Secondary antibody: HRP Goat Anti-Rabbit IgG (H+L) (AS014) at 1:10000 dilution.
Lysates/proteins: 25µg per lane.
Blocking buffer: 3% nonfat dry milk in TBST.
Detection: ECL Basic Kit (RM00020).
Exposure time: 10s.