

# CLCC1 Rabbit pAb

Catalog No.: A17656

## Basic Information

### Observed MW

62kDa

### Calculated MW

62kDa

### Category

Primary antibody

### Applications

ELISA, WB, IHC-P

### Cross-Reactivity

Human, Mouse

## Background

Predicted to enable chloride channel activity. Predicted to be involved in chloride transport. Located in endoplasmic reticulum and mitochondria-associated endoplasmic reticulum membrane. Implicated in retinitis pigmentosa 32.

## Recommended Dilutions

WB 1:500 - 1:2000

IHC-P 1:50 - 1:200

## Immunogen Information

### Gene ID

23155

### Swiss Prot

Q96S66

### Immunogen

Recombinant fusion protein containing a sequence corresponding to amino acids 302-501 of human CLCC1 (NP\_055942.1).

### Synonyms

MCLC; RP32; CLCC1

## Contact

☎ | 400-999-6126

✉ | [cn.market@abclonal.com.cn](mailto:cn.market@abclonal.com.cn)

🌐 | [www.abclonal.com.cn](http://www.abclonal.com.cn)

## Product Information

### Source

Rabbit

### Isotype

IgG

### Purification

Affinity purification

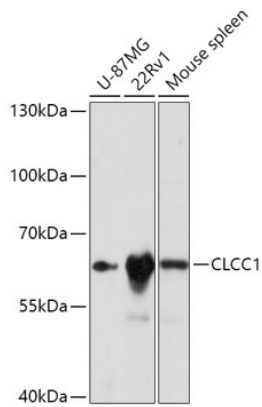
### Storage

Store at -20°C. Avoid freeze / thaw cycles.

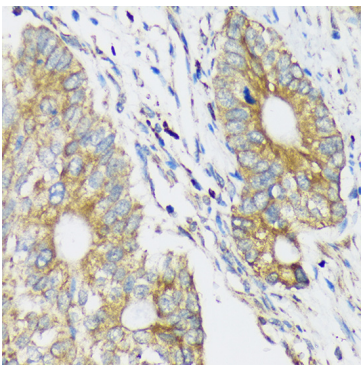
Buffer: PBS with 0.01% thimerosal, 50% glycerol, pH7.3.

## Validation Data

---



Western blot analysis of various lysates using CLCC1 Rabbit pAb (A17656) at 1:1000 dilution.  
Secondary antibody: HRP Goat Anti-Rabbit IgG (H+L) (AS014) at 1:10000 dilution.  
Lysates/proteins: 25µg per lane.  
Blocking buffer: 3% nonfat dry milk in TBST.  
Detection: ECL Basic Kit (RM00020).  
Exposure time: 3s.



Immunohistochemistry analysis of paraffin-embedded Human colon carcinoma using CLCC1 Rabbit pAb (A17656) at dilution of 1:100 (40x lens). Perform microwave antigen retrieval with 10 mM PBS buffer pH 7.2 before commencing with IHC staining protocol.