

# PLCL2 Rabbit pAb

Catalog No.: A17660

## Basic Information

### Observed MW

126kDa

### Calculated MW

126kDa

### Category

Primary antibody

### Applications

ELISA, WB

### Cross-Reactivity

Mouse

## Background

Enables GABA receptor binding activity. Predicted to be involved in negative regulation of cold-induced thermogenesis and phosphatidylinositol-mediated signaling. Predicted to act upstream of or within several processes, including B cell activation; gamma-aminobutyric acid signaling pathway; and negative regulation of B cell receptor signaling pathway. Predicted to be located in cytoplasm.

## Recommended Dilutions

WB 1:500 - 1:2000

## Immunogen Information

### Gene ID

23228

### Swiss Prot

Q9UPR0

### Immunogen

Recombinant fusion protein containing a sequence corresponding to amino acids 130-300 of human PLCL2 (NP\_055999.2).

### Synonyms

PLCE2; PLCL2

## Contact

☎ | 400-999-6126

✉ | [cn.market@abclonal.com.cn](mailto:cn.market@abclonal.com.cn)

🌐 | [www.abclonal.com.cn](http://www.abclonal.com.cn)

## Product Information

### Source

Rabbit

### Isotype

IgG

### Purification

Affinity purification

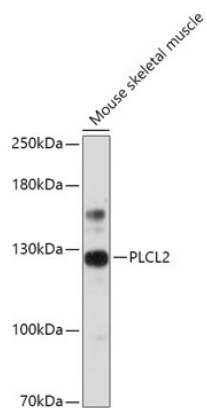
### Storage

Store at -20°C. Avoid freeze / thaw cycles.

Buffer: PBS with 0.01% thimerosal, 50% glycerol, pH7.3.

## Validation Data

---



Western blot analysis of lysates from Mouse skeletal muscle, using PLCL2 Rabbit pAb (A17660) at 1:1000 dilution.

Secondary antibody: HRP Goat Anti-Rabbit IgG (H+L) (AS014) at 1:10000 dilution.

Lysates/proteins: 25µg per lane.

Blocking buffer: 3% nonfat dry milk in TBST.

Detection: ECL Basic Kit (RM00020).

Exposure time: 30s.