

ARHGEF26 Rabbit pAb

Catalog No.: A17677

Basic Information

Observed MW

102kDa

Calculated MW

97kDa

Category

Primary antibody

Applications

ELISA, WB, IF/ICC

Cross-Reactivity

Human, Mouse, Rat

Background

This gene encodes a member of the Rho-guanine nucleotide exchange factor (Rho-GEF) family. These proteins regulate Rho GTPases by catalyzing the exchange of GDP for GTP. The encoded protein specifically activates RhoG and plays a role in the promotion of macropinocytosis. Underexpression of the encoded protein may be a predictive marker of chemoresistant disease. Alternatively spliced transcript variants encoding multiple isoforms have been observed for this gene.

Recommended Dilutions

WB 1:500 - 1:2000

IF/ICC 1:50 - 1:100

Immunogen Information

Gene ID

26084

Swiss Prot

Q96DR7

Immunogen

Recombinant fusion protein containing a sequence corresponding to amino acids 592-871 of human ARHGEF26 (NP_056410.3).

Synonyms

SGEF; CSGEF; HMFN1864; ARHGEF26

Contact

☎ | 400-999-6126

✉ | cn.market@abclonal.com.cn

🌐 | www.abclonal.com.cn

Product Information

Source

Rabbit

Isotype

IgG

Purification

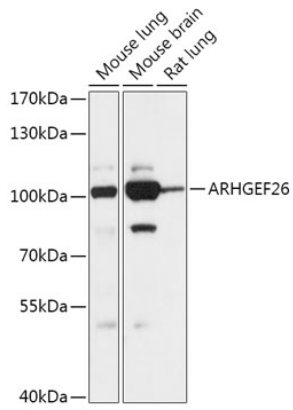
Affinity purification

Storage

Store at -20°C. Avoid freeze / thaw cycles.

Buffer: PBS with 0.01% thimerosal, 50% glycerol, pH7.3.

Validation Data



Western blot analysis of various lysates using ARHGEF26 Rabbit pAb (A17677) at 1:1000 dilution.
Secondary antibody: HRP Goat Anti-Rabbit IgG (H+L) (AS014) at 1:10000 dilution.
Lysates/proteins: 25µg per lane.
Blocking buffer: 3% nonfat dry milk in TBST.
Detection: ECL Basic Kit (RM00020).
Exposure time: 10s.