

ABCA12 Rabbit pAb

Catalog No.: A17680

Basic Information

Observed MW

Refer to figures

Calculated MW

293kDa

Category

Primary antibody

Applications

ELISA,IF/ICC

Cross-Reactivity

Mouse

Background

The membrane-associated protein encoded by this gene is a member of the superfamily of ATP-binding cassette (ABC) transporters. ABC proteins transport various molecules across extra- and intracellular membranes. ABC genes are divided into seven distinct subfamilies (ABC1, MDR/TAP, MRP, ALD, OABP, GCN20, and White). This encoded protein is a member of the ABC1 subfamily, which is the only major ABC subfamily found exclusively in multicellular eukaryotes. Alternative splicing of this gene results in multiple transcript variants.

Recommended Dilutions

IF/ICC 1:50 - 1:200

Immunogen Information

Gene ID

26154

Swiss Prot

Q86UK0

Immunogen

Recombinant fusion protein containing a sequence corresponding to amino acids 2456-2595 of human ABCA12 (NP_775099.2).

Synonyms

LI2; ICR2B; ARCI4A; ARCI4B; ABCA12

Contact

 | 400-999-6126

 | cn.market@abclonal.com.cn

 | www.abclonal.com.cn

Product Information

Source

Rabbit

Isotype

IgG

Purification

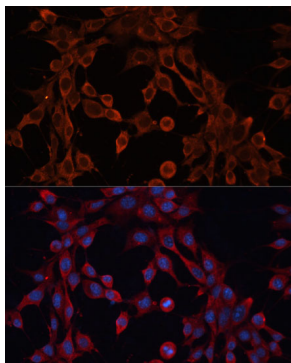
Affinity purification

Storage

Store at -20°C. Avoid freeze / thaw cycles.

Buffer: PBS with 0.01% thimerosal, 50% glycerol, pH7.3.

Validation Data



Immunofluorescence analysis of NIH-3T3 cells using ABCA12 Rabbit pAb (A17680) at dilution of 1:100 (40x lens). Secondary antibody: Cy3 Goat Anti-Rabbit IgG (H+L) (AS007) at 1:500 dilution. Blue: DAPI for nuclear staining.