

# PLEK2 Rabbit pAb

Catalog No.: A17682 **1 Publications**

## Basic Information

### Observed MW

40kDa

### Calculated MW

40kDa

### Category

Primary antibody

### Applications

ELISA, WB

### Cross-Reactivity

Mouse

## Background

The protein encoded by this gene associates with membrane-bound phosphatidylinositols generated by phosphatidylinositol 3-kinase. The encoded protein then interacts with the actin cytoskeleton to induce cell spreading. In conjunction with complement component 1, q subcomponent, B chain (C1QB), this gene shows an increase in expression in melanoma cells and may serve as an accurate biomarker for the disease.

## Recommended Dilutions

WB 1:500 - 1:2000

## Immunogen Information

### Gene ID

26499

### Swiss Prot

Q9NYT0

### Immunogen

Recombinant fusion protein containing a sequence corresponding to amino acids 1-250 of human PLEK2 (NP\_057529.1).

### Synonyms

PLEK2

## Contact

 | 400-999-6126

 | [cn.market@abclonal.com.cn](mailto:cn.market@abclonal.com.cn)

 | [www.abclonal.com.cn](http://www.abclonal.com.cn)

## Product Information

### Source

Rabbit

### Isotype

IgG

### Purification

Affinity purification

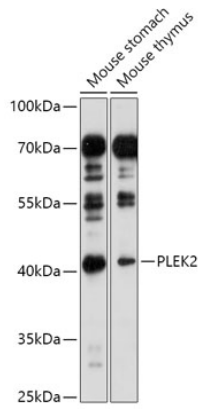
### Storage

Store at -20°C. Avoid freeze / thaw cycles.

Buffer: PBS with 0.01% thimerosal, 50% glycerol, pH7.3.

## Validation Data

---



Western blot analysis of various lysates using PLEK2 Rabbit pAb (A17682) at 1:1000 dilution.  
Secondary antibody: HRP Goat Anti-Rabbit IgG (H+L) (AS014) at 1:10000 dilution.  
Lysates/proteins: 25µg per lane.  
Blocking buffer: 3% nonfat dry milk in TBST.  
Detection: ECL Enhanced Kit (RM00021).  
Exposure time: 180s.