

NSG1 Rabbit pAb

Catalog No.: A17685

Basic Information

Observed MW

21kDa

Calculated MW

Category

Primary antibody

Applications

ELISA, WB

Cross-Reactivity

Human, Mouse, Rat

Background

Predicted to enable clathrin light chain binding activity. Involved in apoptotic process. Located in endoplasmic reticulum.

Recommended Dilutions

WB 1:500 - 1:2000

Immunogen Information

Gene ID

27065

Swiss Prot

Immunogen

Recombinant fusion protein containing a sequence corresponding to amino acids 1-80 of human NSG1 (NP_055207.1).

Synonyms

P21; D4S234; NEEP21; D4S234E; NSG1

Contact

☎ | 400-999-6126

✉ | cn.market@abclonal.com.cn

🌐 | www.abclonal.com.cn

Product Information

Source

Rabbit

Isotype

IgG

Purification

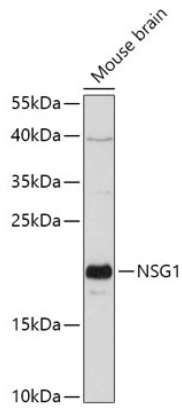
Affinity purification

Storage

Store at -20°C. Avoid freeze / thaw cycles.

Buffer: PBS with 0.01% thimerosal, 50% glycerol, pH7.3.

Validation Data



Western blot analysis of lysates from Mouse brain, using NSG1 Rabbit pAb (A17685) at 1:1000 dilution.
Secondary antibody: HRP Goat Anti-Rabbit IgG (H+L) (AS014) at 1:10000 dilution.
Lysates/proteins: 25µg per lane.
Blocking buffer: 3% nonfat dry milk in TBST.
Detection: ECL Basic Kit (RM00020).
Exposure time: 180s.