

LGALS13 Rabbit pAb

Catalog No.: A17692

Basic Information

Observed MW

16kDa

Calculated MW

16kDa

Category

Primary antibody

Applications

ELISA, WB

Cross-Reactivity

Human

Background

Lysophospholipases are enzymes that act on biological membranes to regulate the multifunctional lysophospholipids. The protein encoded by this gene has lysophospholipase activity. It is composed of two identical subunits which are held together by disulfide bonds. This protein has structural similarity to several members of the beta-galactoside-binding S-type lectin family.

Recommended Dilutions

WB 1:500 - 1:2000

Immunogen Information

Gene ID

29124

Swiss Prot

Q9UHV8

Immunogen

Recombinant fusion protein containing a sequence corresponding to amino acids 30-139 of human LGALS13 (NP_037400.1).

Synonyms

PP13; GAL13; PLAC8; LGALS13

Contact

 | 400-999-6126

 | cn.market@abclonal.com.cn

 | www.abclonal.com.cn

Product Information

Source

Rabbit

Isotype

IgG

Purification

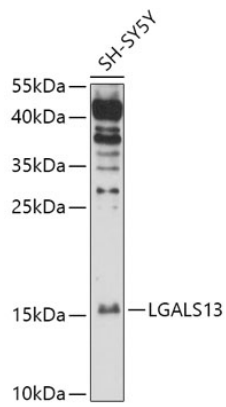
Affinity purification

Storage

Store at -20°C. Avoid freeze / thaw cycles.

Buffer: PBS with 0.01% thimerosal, 50% glycerol, pH7.3.

Validation Data



Western blot analysis of lysates from SH-SY5Y cells, using LGALS13 Rabbit pAb (A17692) at 1:1000 dilution.

Secondary antibody: HRP Goat Anti-Rabbit IgG (H+L) (AS014) at 1:10000 dilution.

Lysates/proteins: 25µg per lane.

Blocking buffer: 3% nonfat dry milk in TBST.

Detection: ECL Basic Kit (RM00020).

Exposure time: 180s.