

# DCDC2 Rabbit pAb

Catalog No.: A17704

## Basic Information

### Observed MW

53kDa

### Calculated MW

53kDa

### Category

Primary antibody

### Applications

ELISA, WB

### Cross-Reactivity

Human, Mouse, Rat

## Background

This gene encodes a doublecortin domain-containing family member. The doublecortin domain has been demonstrated to bind tubulin and enhance microtubule polymerization. This family member is thought to function in neuronal migration where it may affect the signaling of primary cilia. Mutations in this gene have been associated with reading disability (RD) type 2, also referred to as developmental dyslexia. Alternatively spliced transcript variants encoding the same protein have been found for this gene.

## Recommended Dilutions

WB 1:500 - 1:2000

## Immunogen Information

### Gene ID

51473

### Swiss Prot

Q9UHG0

### Immunogen

Recombinant fusion protein containing a sequence corresponding to amino acids 1-250 of human DCDC2 (NP\_001182539).

### Synonyms

NSC; RU2; RU2S; DCDC2A; DFN66; NPHP19; DCDC2

## Contact

☎ | 400-999-6126

✉ | [cn.market@abclonal.com.cn](mailto:cn.market@abclonal.com.cn)

🌐 | [www.abclonal.com.cn](http://www.abclonal.com.cn)

## Product Information

### Source

Rabbit

### Isotype

IgG

### Purification

Affinity purification

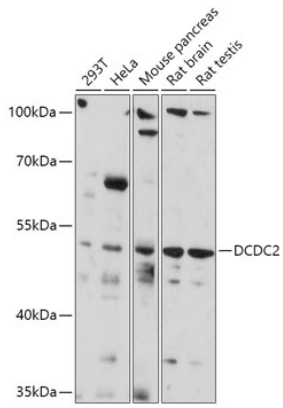
### Storage

Store at -20°C. Avoid freeze / thaw cycles.

Buffer: PBS with 0.01% thimerosal, 50% glycerol, pH7.3.

## Validation Data

---



Western blot analysis of various lysates using DCDC2 Rabbit pAb (A17704) at 1:1000 dilution.  
Secondary antibody: HRP Goat Anti-Rabbit IgG (H+L) (AS014) at 1:10000 dilution.  
Lysates/proteins: 25µg per lane.  
Blocking buffer: 3% nonfat dry milk in TBST.  
Detection: ECL Basic Kit (RM00020).  
Exposure time: 3min.