

# SETD4 Rabbit pAb

Catalog No.: A17708

## Basic Information

### Observed MW

50kDa

### Calculated MW

50kDa

### Category

Primary antibody

### Applications

ELISA, WB

### Cross-Reactivity

Human, Mouse

## Background

Enables histone methyltransferase activity (H4-K20 specific). Involved in histone H4-K20 trimethylation. Located in cytosol and nucleus.

## Recommended Dilutions

WB 1:500 - 1:2000

## Immunogen Information

### Gene ID

54093

### Swiss Prot

Q9NVD3

### Immunogen

Recombinant fusion protein containing a sequence corresponding to amino acids 210-300 of human SETD4 (NP\_001007260).

### Synonyms

C21orf18; C21orf27; SETD4

## Contact

☎ | 400-999-6126

✉ | [cn.market@abclonal.com.cn](mailto:cn.market@abclonal.com.cn)

🌐 | [www.abclonal.com.cn](http://www.abclonal.com.cn)

## Product Information

### Source

Rabbit

### Isotype

IgG

### Purification

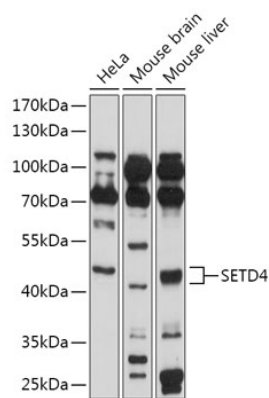
Affinity purification

### Storage

Store at -20°C. Avoid freeze / thaw cycles.

Buffer: PBS with 0.01% thimerosal, 50% glycerol, pH 7.3.

# Validation Data



Western blot analysis of various lysates using SETD4 Rabbit pAb (A17708) at 1:1000 dilution.  
Secondary antibody: HRP Goat Anti-Rabbit IgG (H+L) (AS014) at 1:10000 dilution.  
Lysates/proteins: 25µg per lane.  
Blocking buffer: 3% nonfat dry milk in TBST.  
Detection: ECL Basic Kit (RM00020).  
Exposure time: 90s.