

NCEH1 Rabbit pAb

Catalog No.: A17741 **1 Publications**

Basic Information

Observed MW

46kDa

Calculated MW

46kDa

Category

Primary antibody

Applications

ELISA, WB

Cross-Reactivity

Human, Mouse

Background

Predicted to enable hydrolase activity. Predicted to be involved in ether lipid metabolic process. Predicted to act upstream of or within SMAD protein signal transduction; protein dephosphorylation; and xenobiotic metabolic process. Located in membrane.

Recommended Dilutions

WB 1:500 - 1:2000

Immunogen Information

Gene ID

57552

Swiss Prot

Q6PIU2

Immunogen

Recombinant fusion protein containing a sequence corresponding to amino acids 90-440 of human NCEH1 (NP_065843.3).

Synonyms

NCEH; AADA1; NCEH1

Contact

☎ | 400-999-6126

✉ | cn.market@abclonal.com.cn

🌐 | www.abclonal.com.cn

Product Information

Source

Rabbit

Isotype

IgG

Purification

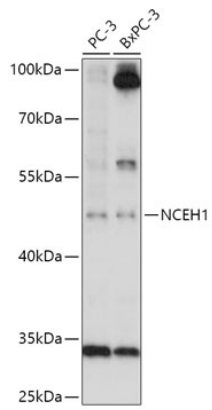
Affinity purification

Storage

Store at -20°C. Avoid freeze / thaw cycles.

Buffer: PBS with 0.01% thimerosal, 50% glycerol, pH7.3.

Validation Data



Western blot analysis of various lysates using NCEH1 Rabbit pAb (A17741) at 1:1000 dilution.
Secondary antibody: HRP Goat Anti-Rabbit IgG (H+L) (AS014) at 1:10000 dilution.
Lysates/proteins: 25µg per lane.
Blocking buffer: 3% nonfat dry milk in TBST.
Detection: ECL Basic Kit (RM00020).
Exposure time: 30s.