

# RANBP10 Rabbit pAb

Catalog No.: A17742

## Basic Information

### Observed MW

73kDa

### Calculated MW

67kDa

### Category

Primary antibody

### Applications

WB, ELISA

### Cross-Reactivity

Human, Mouse

## Background

RAN is a small GTPase involved in the assembly of microtubules to form mitotic spindles. The protein encoded by this gene is a cytoplasmic guanine nucleotide exchange factor (GEF) that binds beta-tubulin and has GEF activity toward RAN. The encoded protein plays a role in the formation of noncentrosomal microtubules. In addition, this protein may be involved in the regulation of D(1) receptor signaling by protein kinase C delta and protein kinase C gamma. Several transcript variants encoding different isoforms have been found for this gene.

## Recommended Dilutions

**WB** 1:500 - 1:2000

**ELISA** Recommended starting concentration is 1 µg/mL. Please optimize the concentration based on your specific assay requirements.

## Immunogen Information

### Gene ID

57610

### Swiss Prot

Q6VN20

### Immunogen

Recombinant protein (or fragment). This information is considered to be commercially sensitive.

### Synonyms

RANBP10

## Contact

☎ | 400-999-6126

✉ | [cn.market@abclonal.com.cn](mailto:cn.market@abclonal.com.cn)

🌐 | [www.abclonal.com.cn](http://www.abclonal.com.cn)

## Product Information

### Source

Rabbit

### Isotype

IgG

### Purification

Affinity purification

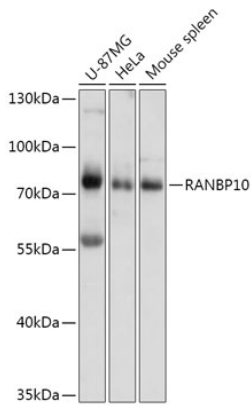
### Storage

Store at -20°C. Avoid freeze / thaw cycles.

Buffer: PBS with 0.01% thimerosal, 50% glycerol, pH7.3.

## Validation Data

---



Western blot analysis of various lysates using RANBP10 Rabbit pAb (A17742) at 1:1000 dilution.  
Secondary antibody: HRP-conjugated Goat anti-Rabbit IgG (H+L) (AS014) at 1:10000 dilution.  
Lysates/proteins: 25 $\mu$ g per lane.  
Blocking buffer: 3% nonfat dry milk in TBST.  
Detection: ECL Basic Kit (RM00020).  
Exposure time: 10s.