

PRDM12 Rabbit pAb

Catalog No.: A17746

Basic Information

Observed MW

45kDa

Calculated MW

40kDa

Category

Primary antibody

Applications

WB,ELISA

Cross-Reactivity

Human, Mouse

Background

This gene encodes a transcriptional regulator of sensory neuronal specification that plays a critical role in pain perception. The encoded protein contains an N-terminal PRDI-BF1 and RIZ homology (PR) domain, a SET domain, and three C-terminal C2H2 zinc finger DNA-binding domains. Naturally occurring mutations in this gene are associated with congenital insensitivity to pain (CIP), and hereditary sensory and autonomic neuropathies (HSAN's) affecting peripheral sensory and autonomic neurons. Deregulation of this gene is associated with solid cancers and hematological malignancies including chronic myeloid leukaemia.

Recommended Dilutions

WB 1:500 - 1:2000

ELISA Recommended starting concentration is 1 µg/mL. Please optimize the concentration based on your specific assay requirements.

Immunogen Information

Gene ID

59335

Swiss Prot

Q9H4Q4

Immunogen

Recombinant protein (or fragment). This information is considered to be commercially sensitive.

Synonyms

PFM9; HSAN8; PRDM12

Contact

☎ | 400-999-6126

✉ | cn.market@abclonal.com.cn

🌐 | www.abclonal.com.cn

Product Information

Source

Rabbit

Isotype

IgG

Purification

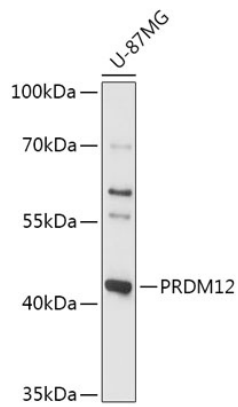
Affinity purification

Storage

Store at -20°C. Avoid freeze / thaw cycles.

Buffer: PBS with 0.01% thimerosal, 50% glycerol, pH7.3.

Validation Data



Western blot analysis of lysates from U-87MG cells, using PRDM12 Rabbit pAb (A17746) at 1:1000 dilution.

Secondary antibody: HRP-conjugated Goat anti-Rabbit IgG (H+L) (AS014) at 1:10000 dilution.

Lysates/proteins: 25µg per lane.

Blocking buffer: 3% nonfat dry milk in TBST.

Detection: ECL Basic Kit (RM00020).

Exposure time: 90s.