

EEFSEC Rabbit pAb

Catalog No.: A17749

Basic Information

Observed MW

72kDa

Calculated MW

65kDa

Category

Primary antibody

Applications

WB,ELISA

Cross-Reactivity

Human

Background

Predicted to enable translation elongation factor activity. Predicted to be involved in selenocysteine incorporation. Predicted to be located in cytoplasm and nucleus. Predicted to be part of ribonucleoprotein complex.

Recommended Dilutions

WB 1:500 - 1:2000

ELISA Recommended starting concentration is 1 µg/mL. Please optimize the concentration based on your specific assay requirements.

Immunogen Information

Gene ID

60678

Swiss Prot

P57772

Immunogen

Recombinant protein (or fragment). This information is considered to be commercially sensitive.

Synonyms

SELB; EFSEC; EEFSEC

Contact

☎ | 400-999-6126

✉ | cn.market@abclonal.com.cn

🌐 | www.abclonal.com.cn

Product Information

Source

Rabbit

Isotype

IgG

Purification

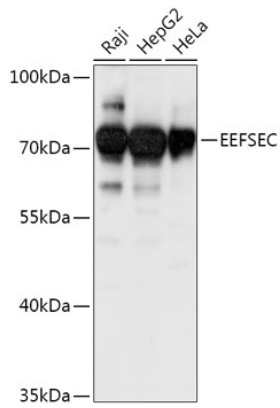
Affinity purification

Storage

Store at -20°C. Avoid freeze / thaw cycles.

Buffer: PBS with 0.01% thimerosal, 50% glycerol, pH7.3.

Validation Data



Western blot analysis of various lysates using EEFSEC Rabbit pAb (A17749) at 1:1000 dilution.
Secondary antibody: HRP-conjugated Goat anti-Rabbit IgG (H+L) (AS014) at 1:10000 dilution.
Lysates/proteins: 25µg per lane.
Blocking buffer: 3% nonfat dry milk in TBST.
Detection: ECL Basic Kit (RM00020).
Exposure time: 1s.