

RHBDF1 Rabbit pAb

Catalog No.: A17754

Basic Information

Observed MW

97kDa

Calculated MW

97kDa

Category

Primary antibody

Applications

ELISA, WB, IF/ICC

Cross-Reactivity

Mouse, Rat

Background

Predicted to enable growth factor binding activity and serine-type endopeptidase activity. Involved in several processes, including negative regulation of protein secretion; regulation of epidermal growth factor receptor signaling pathway; and regulation of proteasomal protein catabolic process. Located in Golgi membrane and endoplasmic reticulum membrane.

Recommended Dilutions

WB	1:500 - 1:2000
IF/ICC	1:50 - 1:200

Immunogen Information

Gene ID

64285

Swiss Prot

Q96CC6

Immunogen

Recombinant fusion protein containing a sequence corresponding to amino acids 200-400 of human RHBDF1 (NP_071895.3).

Synonyms

Dist1; hDist1; C16orf8; EGFR-RS; gene-89; gene-90; RHBDF1

Contact

☎ | 400-999-6126

✉ | cn.market@abclonal.com.cn

🌐 | www.abclonal.com.cn

Product Information

Source

Rabbit

Isotype

IgG

Purification

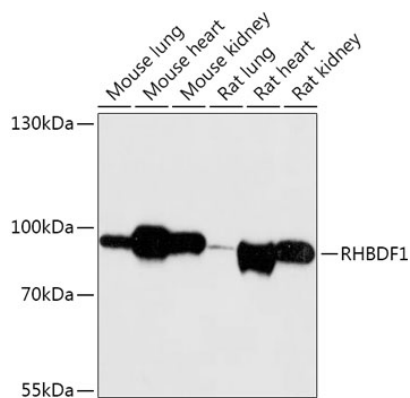
Affinity purification

Storage

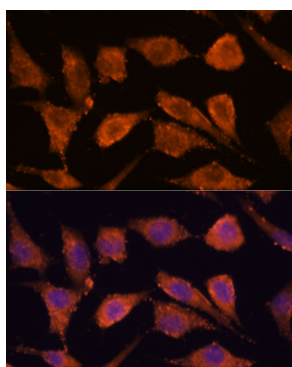
Store at -20°C. Avoid freeze / thaw cycles.

Buffer: PBS with 0.01% thimerosal, 50% glycerol, pH7.3.

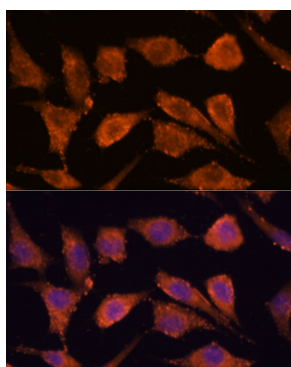
Validation Data



Western blot analysis of various lysates using RHBDF1 Rabbit pAb (A17754) at 1:1000 dilution. Secondary antibody: HRP Goat Anti-Rabbit IgG (H+L) (AS014) at 1:10000 dilution. Lysates/proteins: 25µg per lane. Blocking buffer: 3% nonfat dry milk in TBST. Detection: ECL Basic Kit (RM00020). Exposure time: 30s.



Immunofluorescence analysis of L929 cells using RHBDF1 Rabbit pAb (A17754) at dilution of 1:100 (40x lens). Secondary antibody: Cy3 Goat Anti-Rabbit IgG (H+L) (AS007) at 1:500 dilution. Blue: DAPI for nuclear staining.



Immunofluorescence analysis of L929 cells using RHBDF1 Rabbit pAb (A17754) at dilution of 1:100. Secondary antibody: Cy3 Goat Anti-Rabbit IgG (H+L) (AS007) at 1:500 dilution. Blue: DAPI for nuclear staining.