

# ZNF426 Rabbit pAb

Catalog No.: A17764

## Basic Information

### Observed MW

63kDa

### Calculated MW

63kDa

### Category

Primary antibody

### Applications

ELISA, WB

### Cross-Reactivity

Mouse

## Background

Kaposi's sarcoma-associated herpesvirus (KSHV) can be reactivated from latency by the viral protein RTA. The protein encoded by this gene is a zinc finger transcriptional repressor that interacts with RTA to modulate RTA-mediated reactivation of KSHV. While the encoded protein can repress KSHV reactivation, RTA can induce degradation of this protein through the ubiquitin-proteasome pathway to overcome the repression. Several transcript variants encoding different isoforms have been found for this gene.

## Recommended Dilutions

WB 1:500 - 1:2000

## Immunogen Information

### Gene ID

79088

### Swiss Prot

Q9BUY5

### Immunogen

Recombinant fusion protein containing a sequence corresponding to amino acids 150-270 of human ZNF426 (NP\_077011.1).

### Synonyms

K-RBP; ZNF426

## Contact

☎ | 400-999-6126

✉ | [cn.market@abclonal.com.cn](mailto:cn.market@abclonal.com.cn)

🌐 | [www.abclonal.com.cn](http://www.abclonal.com.cn)

## Product Information

### Source

Rabbit

### Isotype

IgG

### Purification

Affinity purification

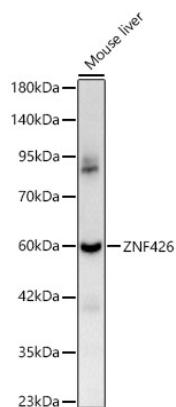
### Storage

Store at -20°C. Avoid freeze / thaw cycles.

Buffer: PBS with 0.01% thimerosal, 50% glycerol, pH7.3.

## Validation Data

---



Western blot analysis of Mouse liver, using ZNF426 Rabbit pAb (A17764) at 1:400 dilution.  
Secondary antibody: HRP Goat Anti-Rabbit IgG (H+L) (AS014) at 1:10000 dilution.  
Lysates/proteins: 25ug per lane.  
Blocking buffer: 3% nonfat dry milk in TBST.  
Detection: ECL Basic Kit (RM00020).  
Exposure time: 60s.