

# THOC6 Rabbit pAb

**Catalog No.: A17766**

## Basic Information

### Observed MW

38kDa

### Calculated MW

38kDa

### Category

Primary antibody

### Applications

ELISA, WB

### Cross-Reactivity

Human, Mouse

## Background

This gene encodes a subunit of the multi-protein THO complex, which is involved in coordination between transcription and mRNA processing. The THO complex is a component of the TREX (transcription/export) complex, which is involved in transcription and export of mRNAs. A missense mutation in this gene is associated with a neurodevelopmental disorder called Beaulieu-Boycott-Innes syndrome.

## Recommended Dilutions

**WB** 1:500 - 1:2000

## Immunogen Information

### Gene ID

79228

### Swiss Prot

Q86W42

### Immunogen

A synthetic peptide corresponding to a sequence within amino acids 50-150 of human THOC6 (NP\_077315.2).

### Synonyms

WDR58; fSAP35; MMRFCGU; THOC6

## Contact

☎ | 400-999-6126

✉ | [cn.market@abclonal.com.cn](mailto:cn.market@abclonal.com.cn)

🌐 | [www.abclonal.com.cn](http://www.abclonal.com.cn)

## Product Information

### Source

Rabbit

### Isotype

IgG

### Purification

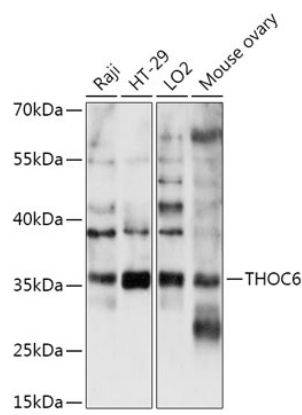
Affinity purification

### Storage

Store at -20°C. Avoid freeze / thaw cycles.

Buffer: PBS with 0.01% thimerosal, 50% glycerol, pH7.3.

Validation Data



Western blot analysis of various lysates using THOC6 Rabbit pAb (A17766) at 1:1000 dilution.  
Secondary antibody: HRP Goat Anti-Rabbit IgG (H+L) (AS014) at 1:10000 dilution.  
Lysates/proteins: 25µg per lane.  
Blocking buffer: 3% nonfat dry milk in TBST.  
Detection: ECL Basic Kit (RM00020).  
Exposure time: 180s.