

LRRK1 Rabbit pAb

Catalog No.: A17768 **2 Publications**

Basic Information

Observed MW

250kDa

Calculated MW

225kDa

Category

Primary antibody

Applications

ELISA, WB

Cross-Reactivity

Human

Background

This gene encodes a multi-domain protein that is a leucine-rich repeat kinase and a GDP/GTP binding protein. The encoded protein is thought to play a role in the regulation of bone mass. Mice lacking a similar gene showed severe osteopetrosis, increased bone mineralization and decreased bone resorption.

Recommended Dilutions

WB 1:500 - 1:2000

Immunogen Information

Gene ID

79705

Swiss Prot

Q38SD2

Immunogen

Recombinant fusion protein containing a sequence corresponding to amino acids 10-90 of human LRRK1 (NP_078928.3).

Synonyms

OSMD; RIPK6; Roco1; LRRK1

Contact

 | 400-999-6126

 | cn.market@abclonal.com.cn

 | www.abclonal.com.cn

Product Information

Source

Rabbit

Isotype

IgG

Purification

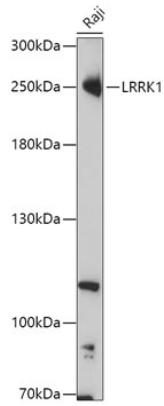
Affinity purification

Storage

Store at -20°C. Avoid freeze / thaw cycles.

Buffer: PBS with 0.01% thimerosal, 50% glycerol, pH 7.3.

Validation Data



Western blot analysis of lysates from Raji cells, using LRRK1 Rabbit pAb (A17768) at 1:1000 dilution.
Secondary antibody: HRP Goat Anti-Rabbit IgG (H+L) (AS014) at 1:10000 dilution.
Lysates/proteins: 25µg per lane.
Blocking buffer: 3% nonfat dry milk in TBST.
Detection: ECL Basic Kit (RM00020).
Exposure time: 60s.