

# POF1B Rabbit pAb

**Catalog No.: A17775**

## Basic Information

**Observed MW**

85kDa

**Calculated MW**

68kDa

**Category**

Primary antibody

**Applications**

ELISA, WB

**Cross-Reactivity**

Human, Rat

## Background

Premature ovarian failure (POF) is characterized by primary or secondary amenorrhea in women less than 40 years old. Two POF susceptibility regions called "POF1" and "POF2" have been identified by breakpoint mapping of X-autosome translocations. POF1 extends from Xq21-qter while POF2 extends from Xq13.3 to Xq21.1. This gene, POF1B, resides in the POF2 region. This gene is expressed at trace levels in mouse prenatal ovary and is barely detectable or absent from adult ovary, in human and in the mouse respectively. This gene's expression is restricted to epithelia with its highest expression in the epidermis, and oropharyngeal and gastro-intestinal tracts. The protein encoded by this gene binds non-muscle actin filaments. The role this gene may play in the etiology of premature ovarian failure remains to be determined.

## Recommended Dilutions

**WB** 1:500 - 1:2000

## Immunogen Information

**Gene ID**

79983

**Swiss Prot**

Q8WVV4

**Immunogen**

Recombinant fusion protein containing a sequence corresponding to amino acids 330-560 of human POF1B (NP\_079197.3).

**Synonyms**

POF; POF2B; POF1B

## Contact

 | 400-999-6126 | [cn.market@abclonal.com.cn](mailto:cn.market@abclonal.com.cn) | [www.abclonal.com.cn](http://www.abclonal.com.cn)

## Product Information

**Source**

Rabbit

**Isotype**

IgG

**Purification**

Affinity purification

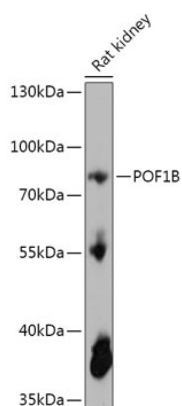
**Storage**

Store at -20°C. Avoid freeze / thaw cycles.

Buffer: PBS with 0.01% thimerosal, 50% glycerol, pH7.3.

## Validation Data

---



Western blot analysis of lysates from Rat kidney, using POF1B Rabbit pAb (A17775) at 1:1000 dilution.  
Secondary antibody: HRP Goat Anti-Rabbit IgG (H+L) (AS014) at 1:10000 dilution.  
Lysates/proteins: 25µg per lane.  
Blocking buffer: 3% nonfat dry milk in TBST.  
Detection: ECL Basic Kit (RM00020).  
Exposure time: 3s.