

MARVELD1 Rabbit pAb

Catalog No.: A17787

Basic Information

Observed MW

19kDa

Calculated MW

19kDa

Category

Primary antibody

Applications

ELISA, WB

Cross-Reactivity

Human, Mouse, Rat

Background

Predicted to be a structural constituent of myelin sheath. Predicted to be involved in myelination. Predicted to be located in several cellular components, including cytoskeleton; nucleus; and plasma membrane. Predicted to be integral component of membrane.

Recommended Dilutions

WB 1:500 - 1:2000

Immunogen Information

Gene ID

83742

Swiss Prot

Q9BSK0

Immunogen

A synthetic peptide corresponding to a sequence within amino acids 1-50 of human MARVELD1 (NP_113672.1).

Synonyms

GB14; MARVD1; MRVLDC1; bA548K23.8; MARVELD1

Contact

 | 400-999-6126

 | cn.market@abclonal.com.cn

 | www.abclonal.com.cn

Product Information

Source

Rabbit

Isotype

IgG

Purification

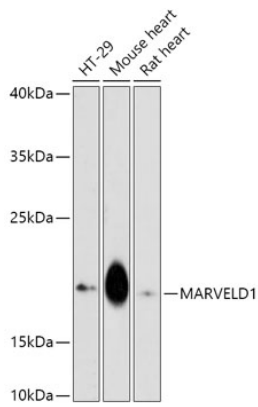
Affinity purification

Storage

Store at -20°C. Avoid freeze / thaw cycles.

Buffer: PBS with 0.01% thimerosal, 50% glycerol, pH7.3.

Validation Data



Western blot analysis of various lysates using MARVELD1 Rabbit pAb (A17787) at 1:1000 dilution.
Secondary antibody: HRP Goat Anti-Rabbit IgG (H+L) (AS014) at 1:10000 dilution.
Lysates/proteins: 25µg per lane.
Blocking buffer: 3% nonfat dry milk in TBST.
Detection: ECL Enhanced Kit (RM00021).
Exposure time: 300s.