

# ABLIM2 Rabbit pAb

Catalog No.: A17792

## Basic Information

### Observed MW

68kDa

### Calculated MW

68kDa

### Category

Primary antibody

### Applications

ELISA, WB

### Cross-Reactivity

Mouse, Rat

## Background

Predicted to enable actin filament binding activity. Predicted to be involved in lamellipodium assembly. Predicted to act upstream of or within positive regulation of transcription by RNA polymerase II. Located in actin cytoskeleton.

## Recommended Dilutions

WB 1:500 - 1:2000

## Immunogen Information

### Gene ID

84448

### Swiss Prot

Q6H8Q1

### Immunogen

Recombinant fusion protein containing a sequence corresponding to amino acids 74-309 of human ABLIM2 (NP\_115808.3).

### Synonyms

ABLIM2

## Contact

☎ | 400-999-6126

✉ | [cn.market@abclonal.com.cn](mailto:cn.market@abclonal.com.cn)

🌐 | [www.abclonal.com.cn](http://www.abclonal.com.cn)

## Product Information

### Source

Rabbit

### Isotype

IgG

### Purification

Affinity purification

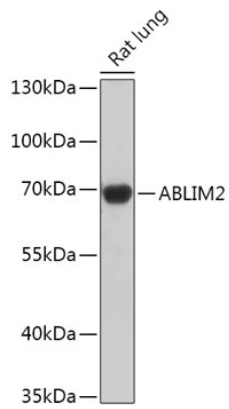
### Storage

Store at -20°C. Avoid freeze / thaw cycles.

Buffer: PBS with 0.01% thimerosal, 50% glycerol, pH7.3.

## Validation Data

---



Western blot analysis of lysates from Rat lung, using ABLIM2 Rabbit pAb (A17792) at 1:1000 dilution.  
Secondary antibody: HRP Goat Anti-Rabbit IgG (H+L) (AS014) at 1:10000 dilution.  
Lysates/proteins: 25µg per lane.  
Blocking buffer: 3% nonfat dry milk in TBST.  
Detection: ECL Basic Kit (RM00020).  
Exposure time: 90s.