

NKD1 Rabbit pAb

Catalog No.: A17799

Basic Information

Observed MW

60kDa

Calculated MW

52kDa

Category

Primary antibody

Applications

ELISA, WB

Cross-Reactivity

Human

Background

In the mouse, Nkd is a Dishevelled (see DVL1; MIM 601365)-binding protein that functions as a negative regulator of the Wnt (see WNT1; MIM 164820)-beta-catenin (see MIM 116806)-Tcf (see MIM 602272) signaling pathway.

Recommended Dilutions

WB 1:500 - 1:2000

Immunogen Information

Gene ID

85407

Swiss Prot

Q969G9

Immunogen

A synthetic peptide corresponding to a sequence within amino acids 1-100 of human NKD1 (NP_149110.1).

Synonyms

Naked1; NKD1

Contact

☎ | 400-999-6126

✉ | cn.market@abclonal.com.cn

🌐 | www.abclonal.com.cn

Product Information

Source

Rabbit

Isotype

IgG

Purification

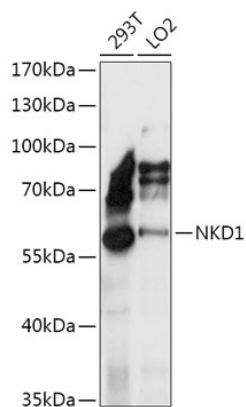
Affinity purification

Storage

Store at -20°C. Avoid freeze / thaw cycles.

Buffer: PBS with 0.01% thimerosal, 50% glycerol, pH7.3.

Validation Data



Western blot analysis of various lysates using NKD1 Rabbit pAb (A17799) at 1:1000 dilution.
Secondary antibody: HRP Goat Anti-Rabbit IgG (H+L) (AS014) at 1:10000 dilution.
Lysates/proteins: 25µg per lane.
Blocking buffer: 3% nonfat dry milk in TBST.
Detection: ECL Basic Kit (RM00020).
Exposure time: 5s.