

# N4BP2L1 Rabbit pAb

**Catalog No.: A17802**

## Basic Information

### Observed MW

29kDa

### Calculated MW

29kDa

### Category

Primary antibody

### Applications

ELISA, WB

### Cross-Reactivity

Mouse

## Background

N4BP2L1 (NEDD4 Binding Protein 2 Like 1) is a Protein Coding gene. Diseases associated with N4BP2L1 include Inflammatory Leiomyosarcoma. Gene Ontology (GO) annotations related to this gene include kinase activity. An important paralog of this gene is N4BP2.

## Recommended Dilutions

**WB** 1:500 - 1:2000

## Immunogen Information

### Gene ID

90634

### Swiss Prot

Q5TBK1

### Immunogen

Recombinant fusion protein containing a sequence corresponding to amino acids 40-120 of human N4BP2L1 (NP\_001073159).

### Synonyms

CG018; N4BP2L1

## Contact

 | 400-999-6126

 | [cn.market@abclonal.com.cn](mailto:cn.market@abclonal.com.cn)

 | [www.abclonal.com.cn](http://www.abclonal.com.cn)

## Product Information

### Source

Rabbit

### Isotype

IgG

### Purification

Affinity purification

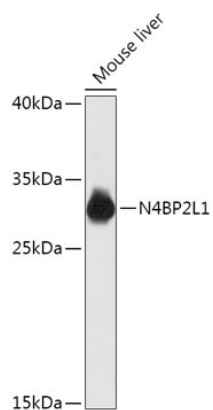
### Storage

Store at -20°C. Avoid freeze / thaw cycles.

Buffer: PBS with 0.01% thimerosal, 50% glycerol, pH7.3.

## Validation Data

---



Western blot analysis of lysates from Mouse liver, using N4BP2L1 Rabbit pAb (A17802) at 1:1000 dilution.  
Secondary antibody: HRP Goat Anti-Rabbit IgG (H+L) (AS014) at 1:10000 dilution.  
Lysates/proteins: 25µg per lane.  
Blocking buffer: 3% nonfat dry milk in TBST.  
Detection: ECL Basic Kit (RM00020).  
Exposure time: 60s.