

# TIMD4 Rabbit pAb

Catalog No.: A17807

## Basic Information

### Observed MW

42kDa

### Calculated MW

42kDa

### Category

Primary antibody

### Applications

ELISA, WB

### Cross-Reactivity

Human, Rat

## Background

Predicted to enable phosphatidylserine binding activity. Predicted to act upstream of or within apoptotic cell clearance. Predicted to be integral component of membrane.

## Recommended Dilutions

WB 1:500 - 1:1000

## Immunogen Information

### Gene ID

91937

### Swiss Prot

Q96H15

### Immunogen

Recombinant fusion protein containing a sequence corresponding to amino acids 25-130 of human TIMD4 (NP\_612388.2).

### Synonyms

TIM4; SMUCKLER; TIMD4

## Contact

☎ | 400-999-6126

✉ | [cn.market@abclonal.com.cn](mailto:cn.market@abclonal.com.cn)

🌐 | [www.abclonal.com.cn](http://www.abclonal.com.cn)

## Product Information

### Source

Rabbit

### Isotype

IgG

### Purification

Affinity purification

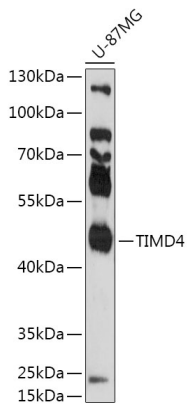
### Storage

Store at -20°C. Avoid freeze / thaw cycles.

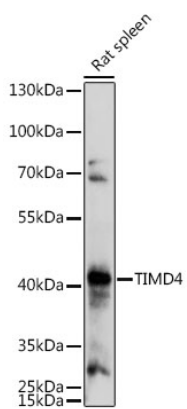
Buffer: PBS with 0.01% thimerosal, 50% glycerol, pH7.3.

## Validation Data

---



Western blot analysis of lysates from U-87MG cells, using TIMD4 Rabbit pAb (A17807) at 1:1000 dilution.  
Secondary antibody: HRP Goat Anti-Rabbit IgG (H+L) (AS014) at 1:10000 dilution.  
Lysates/proteins: 25µg per lane.  
Blocking buffer: 3% nonfat dry milk in TBST.  
Detection: ECL Basic Kit (RM00020).  
Exposure time: 180s.



Western blot analysis of lysates from Rat spleen, using TIMD4 Rabbit pAb (A17807) at 1:1000 dilution.  
Secondary antibody: HRP Goat Anti-Rabbit IgG (H+L) (AS014) at 1:10000 dilution.  
Lysates/proteins: 25µg per lane.  
Blocking buffer: 3% nonfat dry milk in TBST.  
Detection: ECL Basic Kit (RM00020).  
Exposure time: 300s.