

CDHR1 Rabbit pAb

Catalog No.: A17808

Basic Information

Observed MW

110kDa

Calculated MW

94kDa

Category

Primary antibody

Applications

ELISA, WB

Cross-Reactivity

Human, Mouse, Rat

Background

This gene belongs to the cadherin superfamily of calcium-dependent cell adhesion molecules. The encoded protein is a photoreceptor-specific cadherin that plays a role in outer segment disc morphogenesis. Mutations in this gene are associated with inherited retinal dystrophies. Alternatively spliced transcript variants encoding different isoforms have been identified.

Recommended Dilutions

WB 1:500 - 1:2000

Immunogen Information

Gene ID

92211

Swiss Prot

Q96JP9

Immunogen

Recombinant fusion protein containing a sequence corresponding to amino acids 20-300 of human CDHR1 (NP_001165442.1).

Synonyms

RP65; PRCAD; CORD15; PCDH21; CDHR1

Contact

☎ | 400-999-6126

✉ | cn.market@abclonal.com.cn

🌐 | www.abclonal.com.cn

Product Information

Source

Rabbit

Isotype

IgG

Purification

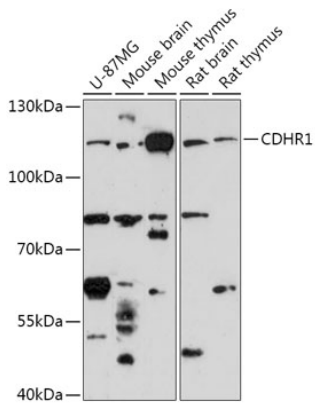
Affinity purification

Storage

Store at -20°C. Avoid freeze / thaw cycles.

Buffer: PBS with 0.01% thimerosal, 50% glycerol, pH7.3.

Validation Data



Western blot analysis of various lysates using CDHR1 Rabbit pAb (A17808) at 1:1000 dilution.
Secondary antibody: HRP Goat Anti-Rabbit IgG (H+L) (AS014) at 1:10000 dilution.
Lysates/proteins: 25µg per lane.
Blocking buffer: 3% nonfat dry milk in TBST.
Detection: ECL Enhanced Kit (RM00021).
Exposure time: 3min.