

# PGLYRP2 Rabbit pAb

Catalog No.: A17814

## Basic Information

### Observed MW

62kDa

### Calculated MW

62kDa

### Category

Primary antibody

### Applications

WB,ELISA

### Cross-Reactivity

Mouse

## Background

This gene encodes a peptidoglycan recognition protein, which belongs to the N-acetylmuramoyl-L-alanine amidase 2 family. This protein hydrolyzes the link between N-acetylmuramoyl residues and L-amino acid residues in bacterial cell wall glycopeptides, and thus may play a scavenger role by digesting biologically active peptidoglycan into biologically inactive fragments.

## Recommended Dilutions

**WB** 1:500 - 1:2000

**ELISA** Recommended starting concentration is 1 µg/mL. Please optimize the concentration based on your specific assay requirements.

## Immunogen Information

### Gene ID

114770

### Swiss Prot

Q96PD5

### Immunogen

Synthetic peptide. This information is considered to be commercially sensitive.

### Synonyms

tagL; PGRPL; PGRP-L; PGLYRPL; HMFT0141; TAGL-like; tagl-beta; tagl-alpha; PGLYRP2

## Contact

☎ | 400-999-6126

✉ | [cn.market@abclonal.com.cn](mailto:cn.market@abclonal.com.cn)

🌐 | [www.abclonal.com.cn](http://www.abclonal.com.cn)

## Product Information

### Source

Rabbit

### Isotype

IgG

### Purification

Affinity purification

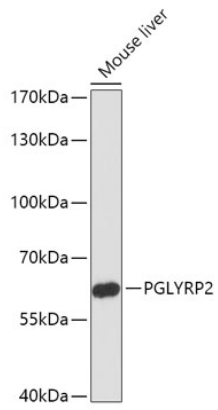
### Storage

Store at -20°C. Avoid freeze / thaw cycles.

Buffer: PBS with 0.01% thimerosal, 50% glycerol, pH7.3.

## Validation Data

---



Western blot analysis of lysates from Mouse liver, using PGLYRP2 Rabbit pAb (A17814) at 1:1000 dilution.  
Secondary antibody: HRP-conjugated Goat anti-Rabbit IgG (H+L) (AS014) at 1:10000 dilution.  
Lysates/proteins: 25µg per lane.  
Blocking buffer: 3% nonfat dry milk in TBST.  
Detection: ECL Enhanced Kit (RM00021).  
Exposure time: 90s.