

TUBGCP5 Rabbit pAb

Catalog No.: A17815

Basic Information

Observed MW

118kDa

Calculated MW

118kDa

Category

Primary antibody

Applications

ELISA, WB

Cross-Reactivity

Rat

Background

Enables microtubule binding activity. Involved in microtubule nucleation. Located in centrosome and cytosol. Part of gamma-tubulin large complex.

Recommended Dilutions

WB 1:500 - 1:2000

Immunogen Information

Gene ID

114791

Swiss Prot

Q96RT8

Immunogen

A synthetic peptide corresponding to a sequence within amino acids 100-200 of human TUBGCP5 (NP_443135.3).

Synonyms

GCP5; TUBGCP5

Contact

 | 400-999-6126

 | cn.market@abclonal.com.cn

 | www.abclonal.com.cn

Product Information

Source

Rabbit

Isotype

IgG

Purification

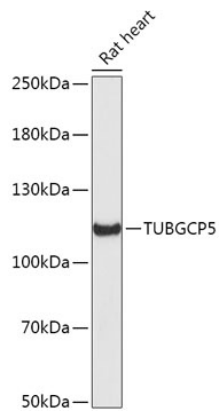
Affinity purification

Storage

Store at -20°C. Avoid freeze / thaw cycles.

Buffer: PBS with 0.01% thimerosal, 50% glycerol, pH7.3.

Validation Data



Western blot analysis of lysates from Rat heart, using TUBGCP5 Rabbit pAb (A17815) at 1:1000 dilution.
Secondary antibody: HRP Goat Anti-Rabbit IgG (H+L) (AS014) at 1:10000 dilution.
Lysates/proteins: 25µg per lane.
Blocking buffer: 3% nonfat dry milk in TBST.
Detection: ECL Enhanced Kit (RM00021).
Exposure time: 90s.