

# STK35 Rabbit pAb

Catalog No.: A17828

## Basic Information

### Observed MW

58kDa

### Calculated MW

58kDa

### Category

Primary antibody

### Applications

ELISA, WB

### Cross-Reactivity

Mouse

## Background

The protein encoded by this gene is a kinase that is predominantly found in the nucleus. However, it can interact with PDLIM1/CLP-36 in the cytoplasm and localize to actin stress fibers. The encoded protein may be a regulator of actin stress fibers in nonmuscle cells.

## Recommended Dilutions

WB 1:500 - 1:2000

## Immunogen Information

### Gene ID

140901

### Swiss Prot

Q8TDR2

### Immunogen

Recombinant fusion protein containing a sequence corresponding to amino acids 190-380 of human STK35 (NP\_543026.2).

### Synonyms

CLIK1; STK35L1; STK35

## Contact

☎ | 400-999-6126

✉ | [cn.market@abclonal.com.cn](mailto:cn.market@abclonal.com.cn)

🌐 | [www.abclonal.com.cn](http://www.abclonal.com.cn)

## Product Information

### Source

Rabbit

### Isotype

IgG

### Purification

Affinity purification

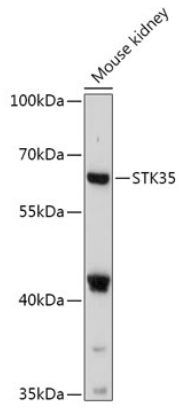
### Storage

Store at -20°C. Avoid freeze / thaw cycles.

Buffer: PBS with 0.01% thimerosal, 50% glycerol, pH7.3.

## Validation Data

---



Western blot analysis of lysates from Mouse kidney, using STK35 Rabbit pAb (A17828) at 1:1000 dilution.  
Secondary antibody: HRP Goat Anti-Rabbit IgG (H+L) (AS014) at 1:10000 dilution.  
Lysates/proteins: 25µg per lane.  
Blocking buffer: 3% nonfat dry milk in TBST.  
Detection: ECL Basic Kit (RM00020).  
Exposure time: 90s.