

CAMSAP1 Rabbit pAb

Catalog No.: A17839

Basic Information

Observed MW

240kDa

Calculated MW

178kDa

Category

Primary antibody

Applications

ELISA, WB, IF/ICC

Cross-Reactivity

Human, Mouse

Background

Enables microtubule minus-end binding activity and spectrin binding activity. Involved in several processes, including neuron projection development; regulation of cell morphogenesis; and regulation of microtubule polymerization. Located in microtubule. Colocalizes with microtubule minus-end.

Recommended Dilutions

WB	1:500 - 1:2000
IF/ICC	1:50 - 1:200

Immunogen Information

Gene ID

157922

Swiss Prot

Q5T5Y3

Immunogen

Recombinant fusion protein containing a sequence corresponding to amino acids 350-650 of human CAMSAP1 (NP_056262.3).

Synonyms

CDCBM12; CAMSAP1

Contact

 | 400-999-6126

 | cn.market@abclonal.com.cn

 | www.abclonal.com.cn

Product Information

Source

Rabbit

Isotype

IgG

Purification

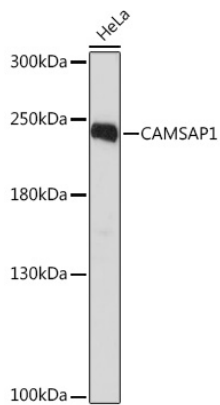
Affinity purification

Storage

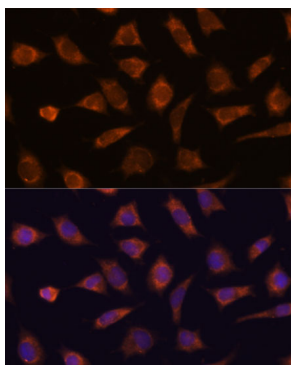
Store at -20°C. Avoid freeze / thaw cycles.

Buffer: PBS with 0.01% thimerosal, 50% glycerol, pH7.3.

Validation Data



Western blot analysis of lysates from HeLa cells, using CAMSAP1 Rabbit pAb (A17839) at 1:1000 dilution.
Secondary antibody: HRP Goat Anti-Rabbit IgG (H+L) (AS014) at 1:10000 dilution.
Lysates/proteins: 25µg per lane.
Blocking buffer: 3% nonfat dry milk in TBST.
Detection: ECL Basic Kit (RM00020).
Exposure time: 90s.



Immunofluorescence analysis of L929 cells using CAMSAP1 Rabbit pAb (A17839) at dilution of 1:100. Secondary antibody: Cy3 Goat Anti-Rabbit IgG (H+L) (AS007) at 1:500 dilution. Blue: DAPI for nuclear staining.