

PSORS1C1 Rabbit pAb

Catalog No.: A17841

Basic Information

Observed MW

16kDa

Calculated MW

17kDa

Category

Primary antibody

Applications

ELISA, WB

Cross-Reactivity

Human

Background

This gene is one of several genes thought to confer susceptibility to psoriasis and systemic sclerosis, located on chromosome 6 near the major histocompatibility complex (MHC) class I region.

Recommended Dilutions

WB 1:500 - 1:2000

Immunogen Information

Gene ID

170679

Swiss Prot

Q9UIG5

Immunogen

A synthetic peptide corresponding to a sequence within amino acids 40-100 of human PSORS1C1 (NP_054787.2).

Synonyms

SEEK1; C6orf16; PSORS1C1

Contact

☎ | 400-999-6126

✉ | cn.market@abclonal.com.cn

🌐 | www.abclonal.com.cn

Product Information

Source

Rabbit

Isotype

IgG

Purification

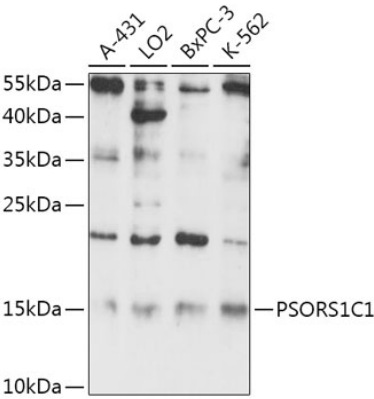
Affinity purification

Storage

Store at -20°C. Avoid freeze / thaw cycles.

Buffer: PBS with 0.01% thimerosal, 50% glycerol, pH7.3.

Validation Data



Western blot analysis of various lysates using PSORS1C1 Rabbit pAb (A17841) at 1:1000 dilution.
Secondary antibody: HRP Goat Anti-Rabbit IgG (H+L) (AS014) at 1:10000 dilution.
Lysates/proteins: 25µg per lane.
Blocking buffer: 3% nonfat dry milk in TBST.
Detection: ECL Basic Kit (RM00020).
Exposure time: 90s.