

# VWC2L Rabbit pAb

Catalog No.: A17853

## Basic Information

### Observed MW

23kDa

### Calculated MW

### Category

Primary antibody

### Applications

ELISA, WB

### Cross-Reactivity

Human, Mouse

## Background

Acts upstream of or within negative regulation of BMP signaling pathway and positive regulation of neuron differentiation. Located in extracellular space. Part of AMPA glutamate receptor complex. Is expressed in brain; central nervous system; hippocampus; hypothalamus; and thalamus. Orthologous to human VWC2L (von Willebrand factor C domain containing 2 like).

## Recommended Dilutions

WB 1:500 - 1:2000

## Immunogen Information

### Gene ID

320460

### Swiss Prot

### Immunogen

A synthetic peptide corresponding to a sequence within amino acids 1-50 of mouse VWC2L (NP\_796138.2).

### Synonyms

Brl; A830006F12Rik; VWC2L

## Contact

☎ | 400-999-6126

✉ | [cn.market@abclonal.com.cn](mailto:cn.market@abclonal.com.cn)

🌐 | [www.abclonal.com.cn](http://www.abclonal.com.cn)

## Product Information

### Source

Rabbit

### Isotype

IgG

### Purification

Affinity purification

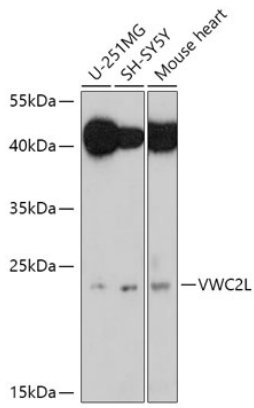
### Storage

Store at -20°C. Avoid freeze / thaw cycles.

Buffer: PBS with 0.01% thimerosal, 50% glycerol, pH7.3.

## Validation Data

---



Western blot analysis of various lysates using VWC2L Rabbit pAb (A17853) at 1:1000 dilution.  
Secondary antibody: HRP Goat Anti-Rabbit IgG (H+L) (AS014) at 1:10000 dilution.  
Lysates/proteins: 25µg per lane.  
Blocking buffer: 3% nonfat dry milk in TBST.  
Detection: ECL Basic Kit (RM00020).  
Exposure time: 90s.