

SMC2 Rabbit pAb

Catalog No.: A17867

Basic Information

Observed MW

135kDa

Calculated MW

136kDa

Category

Primary antibody

Applications

ELISA, WB

Cross-Reactivity

Human, Mouse

Background

Predicted to enable ATP binding activity; chromatin binding activity; and single-stranded DNA binding activity. Involved in mitotic chromosome condensation. Located in condensed chromosome; cytoplasm; and nuclear lumen. Part of condensin complex.

Recommended Dilutions

WB 1:500 - 1:2000

Immunogen Information

Gene ID

10592

Swiss Prot

O95347

Immunogen

Recombinant fusion protein containing a sequence corresponding to amino acids 700-900 of human SMC2 (NP_006435.2).

Synonyms

CAPE; CAP-E; SMC-2; SMC2L1; SMC2

Contact

 | 400-999-6126

 | cn.market@abclonal.com.cn

 | www.abclonal.com.cn

Product Information

Source

Rabbit

Isotype

IgG

Purification

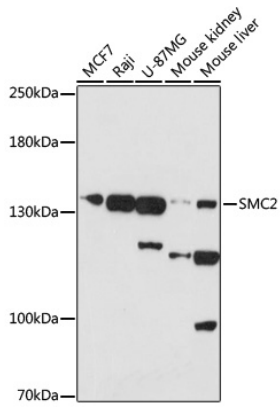
Affinity purification

Storage

Store at -20°C. Avoid freeze / thaw cycles.

Buffer: PBS with 0.01% thimerosal, 50% glycerol, pH7.3.

Validation Data



Western blot analysis of various lysates using SMC2 Rabbit pAb (A17867) at 1:1000 dilution.
Secondary antibody: HRP Goat Anti-Rabbit IgG (H+L) (AS014) at 1:10000 dilution.
Lysates/proteins: 25µg per lane.
Blocking buffer: 3% nonfat dry milk in TBST.
Detection: ECL Basic Kit (RM00020).
Exposure time: 30s.