

# Enpp1 Rabbit pAb

**Catalog No.: A17876**

## Basic Information

**Observed MW**

120kDa/170kDa

**Calculated MW**

103kDa

**Category**

Primary antibody

**Applications**

ELISA, WB, IF/ICC

**Cross-Reactivity**

Human, Mouse, Rat

## Background

This gene encodes a member of the nucleoside pyrophosphatase/phosphodiesterase family of enzymes that catalyzes the hydrolysis of pyrophosphate and phosphodiester bonds in nucleotide triphosphates and oligonucleotides, respectively, to generate nucleoside 5'-monophosphates. The encoded protein is a type II transmembrane glycoprotein that negatively regulates bone mineralization. Mice harboring a nonsense mutation in this gene, termed tiptoe walking (ttw), exhibit ectopic ossification of the spinal ligaments. The encoded protein binds to the insulin receptor, inhibits downstream signaling events and induces insulin resistance and glucose tolerance. This gene is located adjacent to a paralog on chromosome 10. Alternative splicing results in multiple transcript variants encoding different isoforms.

## Recommended Dilutions

**WB** 1:500 - 1:1000**IF/ICC** 1:50 - 1:200

## Immunogen Information

**Gene ID**

18605

**Swiss Prot**

G3X9S2

**Immunogen**

Recombinant fusion protein containing a sequence corresponding to amino acids 580-730 of mouse Enpp1 (NP\_032839.3).

**Synonyms**

Pca; ttw; twy; M6S1; NPP1; Npps; PC-1; Ly-41; Pca-1; Pdnp1; CD203c; E-NPP1; E-NPP 1; 4833416E15Rik; Enpp1

## Contact

 | 400-999-6126 | [cn.market@abclonal.com.cn](mailto:cn.market@abclonal.com.cn) | [www.abclonal.com.cn](http://www.abclonal.com.cn)

## Product Information

**Source**

Rabbit

**Isotype**

IgG

**Purification**

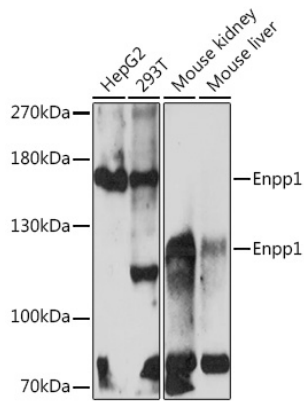
Affinity purification

**Storage**

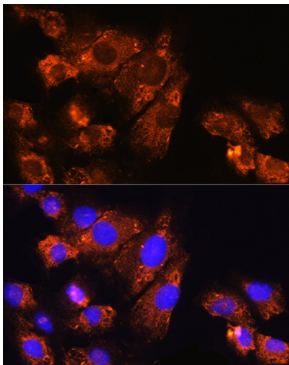
Store at -20°C. Avoid freeze / thaw cycles.

Buffer: PBS with 0.01% thimerosal, 50% glycerol, pH7.3.

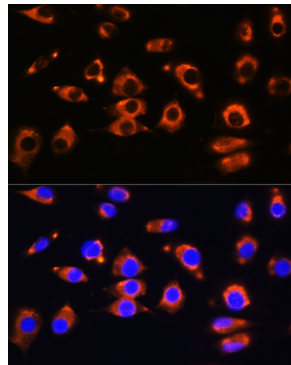
## Validation Data



Western blot analysis of various lysates using Enpp1 Rabbit pAb (A17876) at 1:1000 dilution.  
Secondary antibody: HRP Goat Anti-Rabbit IgG (H+L) (AS014) at 1:10000 dilution.  
Lysates/proteins: 25µg per lane.  
Blocking buffer: 3% nonfat dry milk in TBST.  
Detection: ECL Basic Kit (RM00020).  
Exposure time: 30s.



Immunofluorescence analysis of C6 cells using Enpp1 Rabbit pAb (A17876) at dilution of 1:100. Secondary antibody: Cy3 Goat Anti-Rabbit IgG (H+L) (AS007) at 1:500 dilution. Blue: DAPI for nuclear staining.



Immunofluorescence analysis of L929 cells using Enpp1 Rabbit pAb (A17876) at dilution of 1:100. Secondary antibody: Cy3 Goat Anti-Rabbit IgG (H+L) (AS007) at 1:500 dilution. Blue: DAPI for nuclear staining.