

# SLC35D3 Rabbit pAb

Catalog No.: A17880

## Basic Information

### Observed MW

44kDa

### Calculated MW

44kDa

### Category

Primary antibody

### Applications

ELISA, WB

### Cross-Reactivity

Human

## Background

Predicted to enable antiporter activity and pyrimidine nucleotide-sugar transmembrane transporter activity. Predicted to be involved in carbohydrate transport and pyrimidine nucleotide-sugar transmembrane transport. Predicted to act upstream of or within energy homeostasis and positive regulation of protein exit from endoplasmic reticulum. Predicted to be located in early endosome and endoplasmic reticulum. Predicted to be integral component of membrane. Predicted to be active in Golgi apparatus.

## Recommended Dilutions

WB 1:500 - 1:2000

## Immunogen Information

### Gene ID

340146

### Swiss Prot

Q5M8T2

### Immunogen

Recombinant fusion protein containing a sequence corresponding to amino acids 310-390 of human SLC35D3 (NP\_001008783.1).

### Synonyms

FRCL1; SLC35D3

## Contact

☎ | 400-999-6126

✉ | [cn.market@abclonal.com.cn](mailto:cn.market@abclonal.com.cn)

🌐 | [www.abclonal.com.cn](http://www.abclonal.com.cn)

## Product Information

### Source

Rabbit

### Isotype

IgG

### Purification

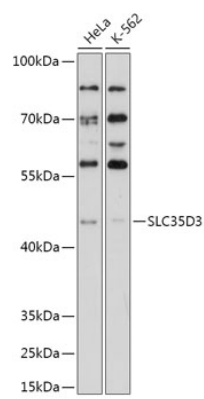
Affinity purification

### Storage

Store at -20°C. Avoid freeze / thaw cycles.

Buffer: PBS with 0.01% thimerosal, 50% glycerol, pH7.3.

# Validation Data



Western blot analysis of various lysates using SLC35D3 Rabbit pAb (A17880) at 1:1000 dilution.  
Secondary antibody: HRP Goat Anti-Rabbit IgG (H+L) (AS014) at 1:10000 dilution.  
Lysates/proteins: 25µg per lane.  
Blocking buffer: 3% nonfat dry milk in TBST.  
Detection: ECL Enhanced Kit (RM00021).  
Exposure time: 90s.