

# MTCO1 Rabbit pAb

Catalog No.: A17889SP **24 Publications**

## Basic Information

### Observed MW

37 kDa

### Calculated MW

57 kDa

### Category

Primary antibody

### Applications

WB,IF/ICC,IF-P,IHC-P,ELISA

### Cross-Reactivity

Human, Mouse, Rat

## Background

Contributes to cytochrome-c oxidase activity. Predicted to be involved in electron transport coupled proton transport and mitochondrial electron transport, cytochrome c to oxygen. Part of mitochondrial respiratory chain complex III and mitochondrial respiratory chain complex IV.

## Recommended Dilutions

<b>WB</b>	1:9000 - 1:50000
<b>IF/ICC</b>	1:400 - 1:1600
<b>IF-P</b>	1:400 - 1:1600
<b>IHC-P</b>	1:2000 - 1:8000
<b>ELISA</b>	Recommended starting concentration is 1 µg/mL. Please optimize the concentration based on your specific assay requirements. For high-ratio antibody dilutions (≥1:10000) a sequential dilution method is strongly recommended to ensure measurement accuracy.

## Immunogen Information

### Gene ID

4512/17708

### Swiss Prot

P00395/P00397

### Immunogen

This information is considered to be commercially sensitive.

### Synonyms

COI; MTCO1; COX1

## Product Information

### Source

Rabbit

### Isotype

IgG

### Purification

Affinity purification

### Storage

Store at -20°C. Avoid freeze / thaw cycles.

Buffer: PBS, pH 7.3, containing 50% glycerol. Preserved with Proclin300 or sodium azide.

May contain 0.05% BSA as specified on the Certificate of Analysis.

## Contact

---

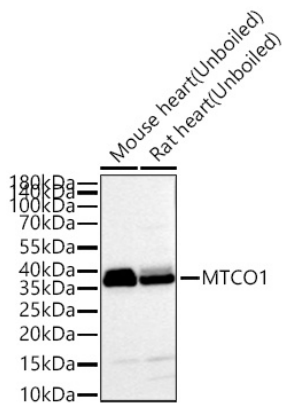
 | 400-999-6126

 | [cn.market@abclonal.com.cn](mailto:cn.market@abclonal.com.cn)

 | [www.abclonal.com.cn](http://www.abclonal.com.cn)

---

## Validation Data



Western blot analysis of various lysates using MTCO1 Rabbit pAb (A17889SP) at 1:9000 dilution incubated overnight at 4°C.

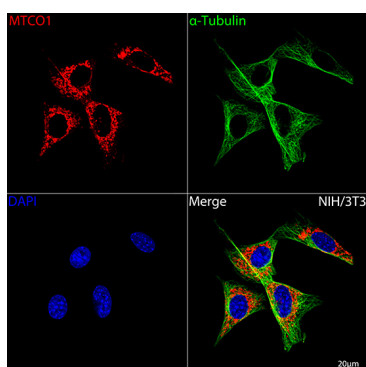
Secondary antibody: HRP-conjugated Goat anti-Rabbit IgG (H+L) (AS014) at 1:10000 dilution.

Lysates/proteins: 25 µg per lane.

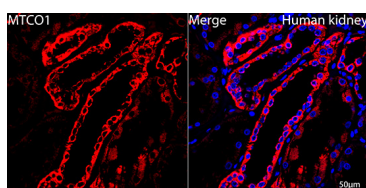
Blocking buffer: 3% nonfat dry milk in TBST.

Detection: ECL Basic Kit (RM00020).

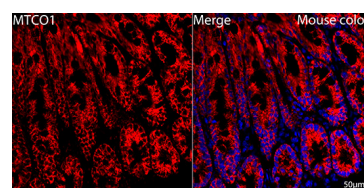
Exposure time: 1 s.



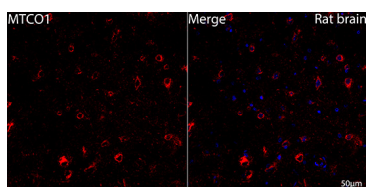
Confocal imaging of NIH/3T3 cells using MTCO1 Rabbit pAb (A17889SP, dilution 1:800) followed by a further incubation with Cy3-conjugated Goat anti-Rabbit IgG (H+L) (AS007, dilution 1:500) (Red). The cells were counterstained with  $\alpha$ -Tubulin Mouse mAb (AC012, dilution 1:400) followed by incubation with ABflo® 488-conjugated Goat Anti-Mouse IgG (H+L) Ab (AS076, dilution 1:500) (Green). DAPI was used for nuclear staining (Blue). Objective: 100x.



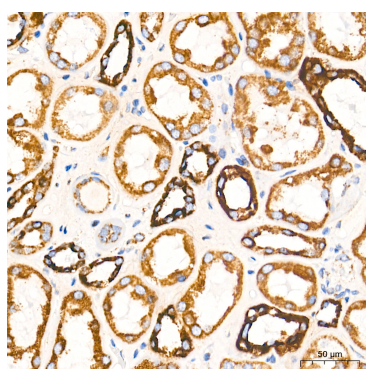
Confocal imaging of paraffin-embedded Human kidney tissue using MTCO1 Rabbit pAb (A17889SP, dilution 1:800) followed by a further incubation with Cy3-conjugated Goat anti-Rabbit IgG (H+L) (AS007, dilution 1:500) (Red). DAPI was used for nuclear staining (Blue). High pressure antigen retrieval performed with 0.01M Citrate Buffer (pH 6.0) prior to IF staining. Objective: 40x.



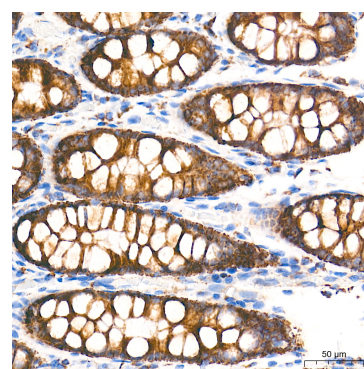
Confocal imaging of paraffin-embedded Mouse colon tissue using MTCO1 Rabbit pAb (A17889SP, dilution 1:800) followed by a further incubation with Cy3-conjugated Goat anti-Rabbit IgG (H+L) (AS007, dilution 1:500) (Red). DAPI was used for nuclear staining (Blue). High pressure antigen retrieval performed with 0.01M Citrate Buffer (pH 6.0) prior to IF staining. Objective: 40x.



Confocal imaging of paraffin-embedded Rat brain tissue using MTCO1 Rabbit pAb (A17889SP, dilution 1:800) followed by a further incubation with Cy3-conjugated Goat anti-Rabbit IgG (H+L) (AS007, dilution 1:500) (Red). DAPI was used for nuclear staining (Blue). High pressure antigen retrieval performed with 0.01M Citrate Buffer (pH 6.0) prior to IF staining. Objective: 40x.



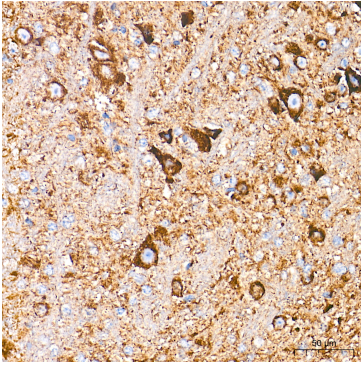
Immunohistochemistry analysis of paraffin-embedded Human kidney tissue using MTCO1 Rabbit pAb (A17889SP) at a dilution of 1:4000 (40x lens). High pressure antigen retrieval performed with 0.01M Tris-EDTA Buffer (pH 9.0) prior to IHC staining.



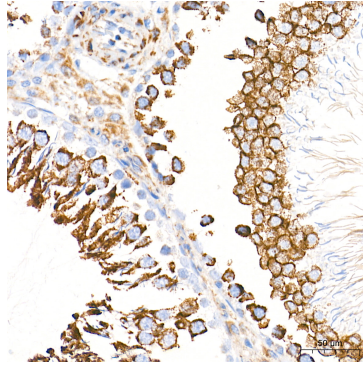
Immunohistochemistry analysis of paraffin-embedded Mouse colon tissue using MTCO1 Rabbit pAb (A17889SP) at a dilution of 1:4000 (40x lens). High pressure antigen retrieval performed with 0.01M Tris-EDTA Buffer (pH 9.0) prior to IHC staining.

## Validation Data

---



Immunohistochemistry analysis of paraffin-embedded Mouse brain tissue using MTCO1 Rabbit pAb (A17889SP) at a dilution of 1:4000 (40x lens). High pressure antigen retrieval performed with 0.01M Tris-EDTA Buffer (pH 9.0) prior to IHC staining.



Immunohistochemistry analysis of paraffin-embedded Rat testis tissue using MTCO1 Rabbit pAb (A17889SP) at a dilution of 1:4000 (40x lens). High pressure antigen retrieval performed with 0.01M Tris-EDTA Buffer (pH 9.0) prior to IHC staining.