

MT-ATP8 Rabbit pAb

Catalog No.: A17890 **6 Publications**

Basic Information

Observed MW

12kDa

Calculated MW

8kDa

Category

Primary antibody

Applications

WB,IHC-P,IF/ICC,ELISA

Cross-Reactivity

Human, Mouse, Rat

Background

Contributes to proton-transporting ATP synthase activity, rotational mechanism. Involved in mitochondrial ATP synthesis coupled proton transport. Part of mitochondrial proton-transporting ATP synthase complex. Implicated in multiple sclerosis and urinary bladder cancer.

Recommended Dilutions

WB 1:500 - 1:1000

IHC-P 1:50 - 1:100

IF/ICC 1:50 - 1:100

ELISA Recommended starting concentration is 1 µg/mL. Please optimize the concentration based on your specific assay requirements.

Immunogen Information

Gene ID

4509

Swiss Prot

P03928

Immunogen

A synthetic peptide corresponding to a sequence within amino acids 1-68 of human MT-ATP8 (YP_003024030.1).

Synonyms

ATPase8; MTATP8; ATP8; MT-ATP8

Contact

 | 400-999-6126

 | cn.market@abclonal.com.cn

 | www.abclonal.com.cn

Product Information

Source

Rabbit

Isotype

IgG

Purification

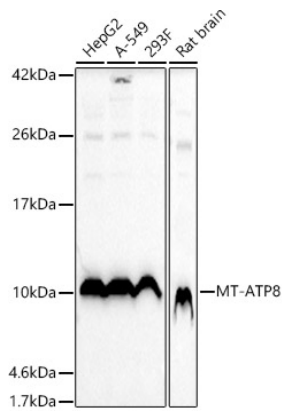
Affinity purification

Storage

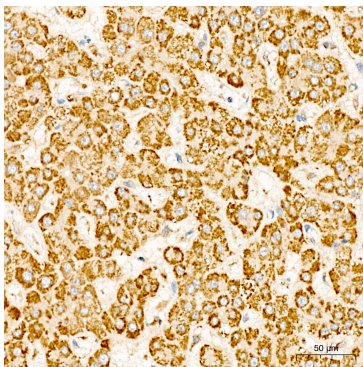
Store at -20°C. Avoid freeze / thaw cycles.

Buffer: PBS with 0.05% proclin300,50% glycerol,pH7.3.

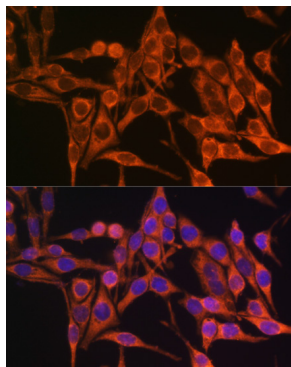
Validation Data



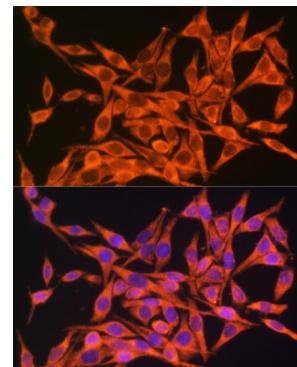
Western blot analysis of various lysates using MT-ATP8 Rabbit pAb (A17890) at 1:1000 dilution. Secondary antibody: HRP-conjugated Goat anti-Rabbit IgG (H+L) (AS014) at 1:10000 dilution. Lysates/proteins: 25µg per lane. Blocking buffer: 3% nonfat dry milk in TBST. Detection: ECL Basic Kit (RM00020). Exposure time: 10s.



Immunohistochemistry analysis of paraffin-embedded Human liver tissue using MT-ATP8 Rabbit pAb (A17890) at a dilution of 1:100 (40x lens). High pressure antigen retrieval was performed with 0.01 M citrate buffer (pH 6.0) prior to IHC staining.



Immunofluorescence analysis of HeLa cells using MT-ATP8 Rabbit pAb (A17890) at dilution of 1:100. Secondary antibody: Cy3-conjugated Goat anti-Rabbit IgG (H+L) (AS007) at 1:500 dilution. Blue: DAPI for nuclear staining.



Immunofluorescence analysis of HeLa cells using MT-ATP8 Rabbit pAb (A17890) at dilution of 1:100. Secondary antibody: Cy3-conjugated Goat anti-Rabbit IgG (H+L) (AS007) at 1:500 dilution. Blue: DAPI for nuclear staining.